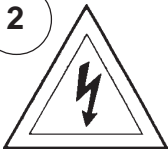


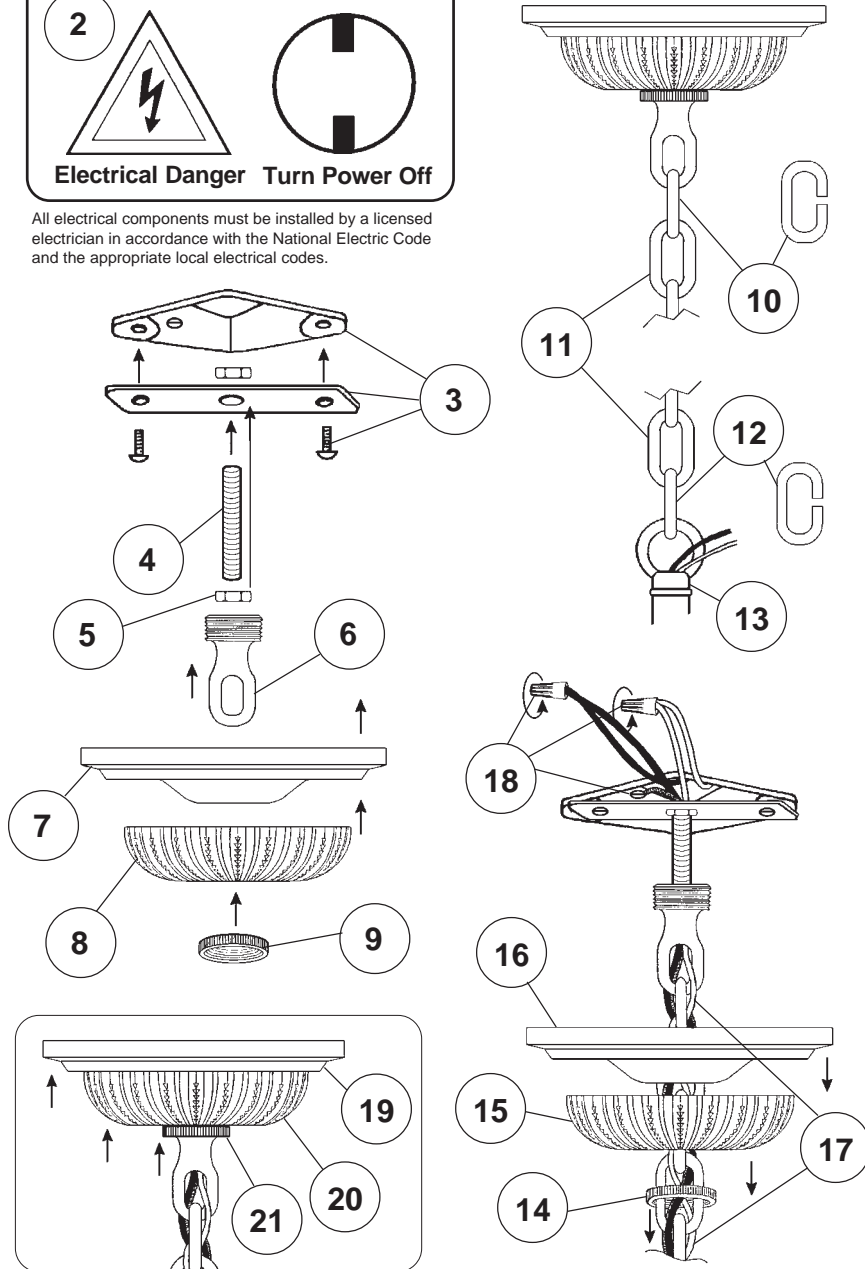
Instructions for electrician STEPS 2 - 21

WARNING:



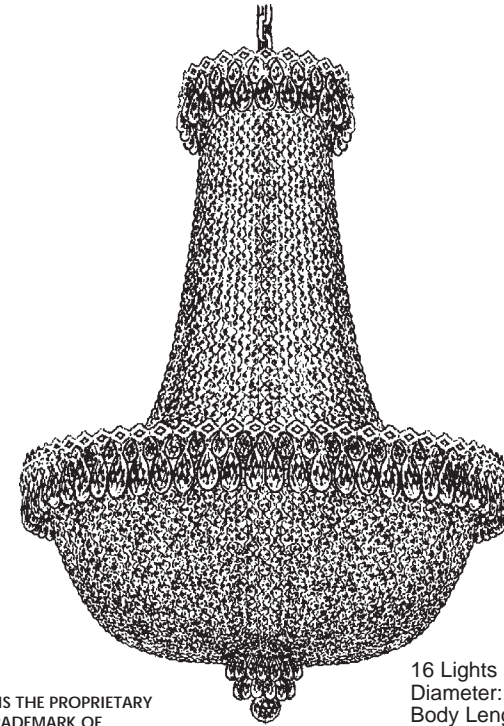
Electrical Danger Turn Power Off

All electrical components must be installed by a licensed electrician in accordance with the National Electric Code and the appropriate local electrical codes.



CHANDELIER 2624-___ TRIM DIAGRAM

(Finish Option)



THIS DESIGN IS THE PROPRIETARY
TRADE DRESS/TRADEMARK OF
SCHONBEK WORLDWIDE LIGHTING INC.

16 Lights
Diameter: 22-1/2"
Body Length: 32"
Hanging Weight: 22 lbs.

SCHONBEK®

See diagram on back page
Follow steps in exact order
Save this trim diagram for future reference

IMPORTANT

1

Person who opens carton should record the following information for future service.

CODE # _____ Four-digit number on outside of carton.
PACKER # _____ See crystal package label.
ORDER # _____ See crystal package label.

SCHONBEK IS A WORLD LEADER IN CHANDELIER DESIGN. PATENTS INCLUDE:
#D5,222,805

Instructions for crystal trimming STEPS 22 - 34



22

You will need 16 - C10
25 Watts Recommended
60 Watts Max

Install bulb and be sure
to test fixture **BEFORE**
trimming.

23

Attach the bottom
finial section by
attaching the jackchain
into the half ball located on
the bottom of the frame.

NOTE: Hang drop "C"
from scallop, **NOT**
through the loop on the
gallery.

DIAGRAM #2

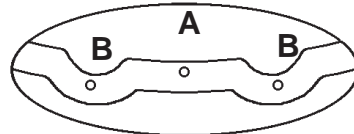
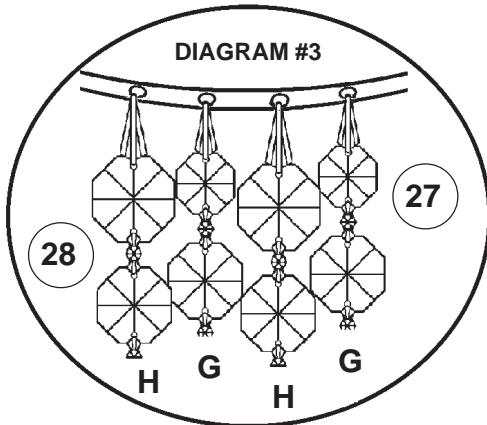
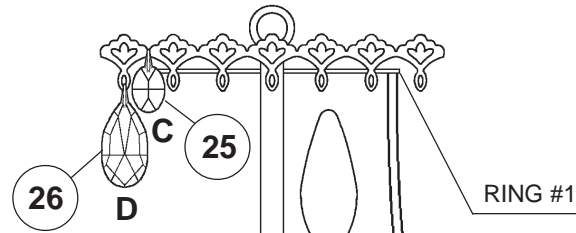


DIAGRAM #3



Large jewel at top and graduates to a
smaller jewel toward bottom of chain.



RING #1

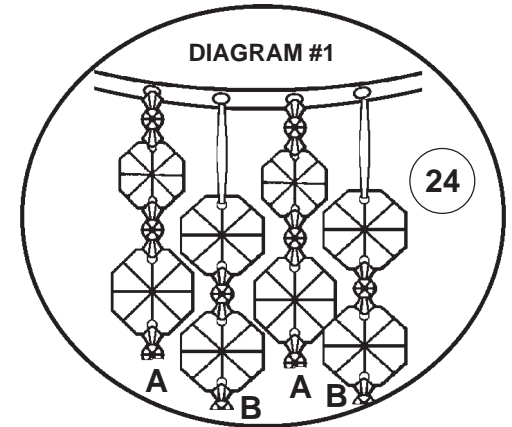
A B

24

RING #2

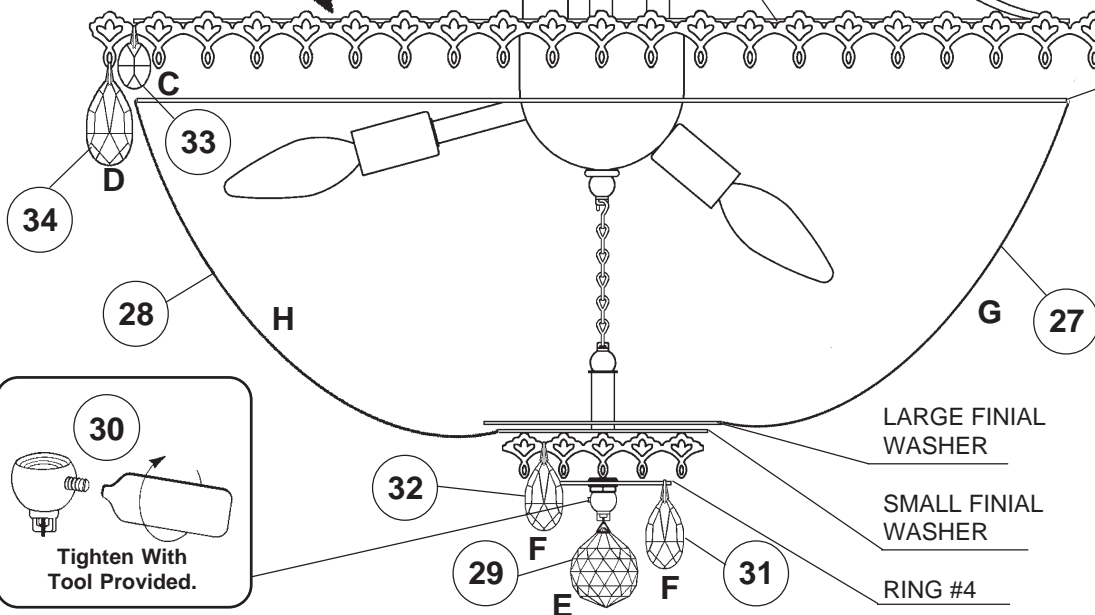
RING #3

DIAGRAM #1



24

Small jewel at top and graduates to a
larger jewel toward bottom of chain.



C D

33

34

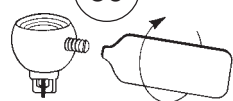
28

H

G

27

30



Tighten With
Tool Provided.

32

29

E

F

F

31

LARGE FINIAL
WASHER

SMALL FINIAL
WASHER

RING #4

NOTE: Raise the large
finial washer for easier
installation of Chains "H".