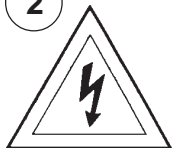


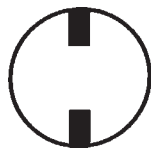
## Instructions for electrician STEPS 2 - 21

2

**WARNING:**

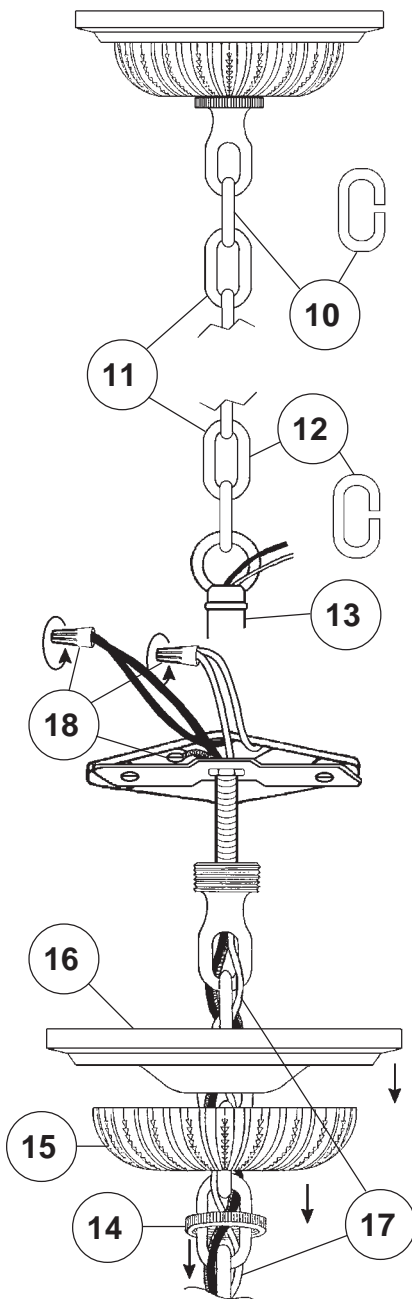
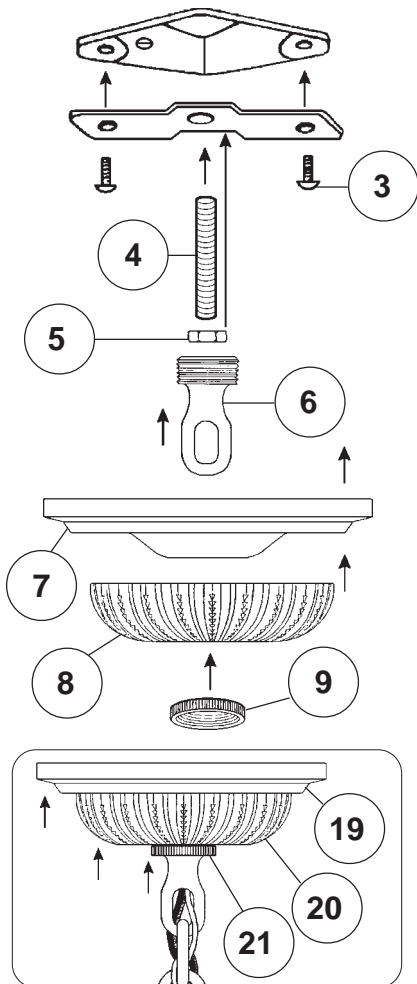


**Electrical Danger**



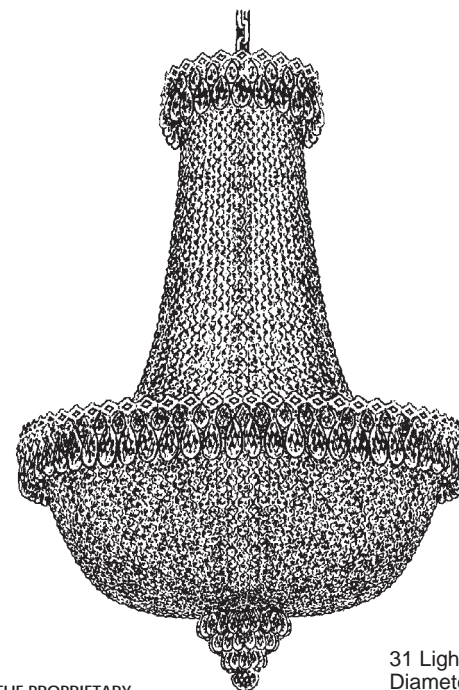
**Turn Power Off**

All electrical components must be installed by a licensed electrician in accordance with the National Electric Code and the appropriate local electrical codes.



## CHANDELIER 2628-\_\_\_\_ TRIM DIAGRAM

(Finish Option)



**T**HIS DESIGN IS THE PROPRIETARY  
TRADE DRESS/TRADEMARK OF  
SCHONBEK WORLDWIDE LIGHTING INC.

31 Lights  
Diameter: 28"  
Body Length: 40"  
Hanging Weight: 36 lbs.

# SCHONBEK®

See diagram on back page  
Follow steps in exact order  
Save this trim diagram for future reference

1

### IMPORTANT

*Person who opens carton should record the following information for future service.*

CODE # \_\_\_\_\_ Four-digit number on outside of carton.  
PACKER # \_\_\_\_\_ See crystal package label.  
ORDER # \_\_\_\_\_ See crystal package label.

SCHONBEK IS A WORLD LEADER IN CHANDELIER DESIGN. PATENTS INCLUDE:  
#D5,222,805

# Instructions for crystal trimming STEPS 22 - 35



22

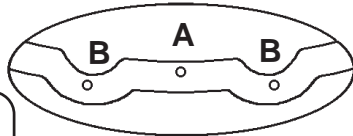
You will need 31 - C10  
25 Watts Recommended  
60 Watts Max

Install bulb and be sure  
to test fixture **BEFORE**  
trimming.

23

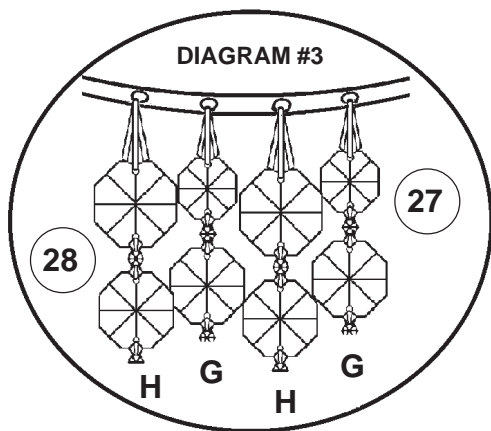
Attach the bottom  
finial section by  
attaching the jackchain  
into the half ball located on  
the bottom of the frame.

DIAGRAM #2



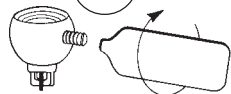
**NOTE:** Hang drop "C"  
from scallop, **NOT**  
through the loop on the  
gallery.

DIAGRAM #3



Large jewel at top and graduates to a  
smaller jewel toward bottom of chain.

30



Tighten With  
Tool Provided.

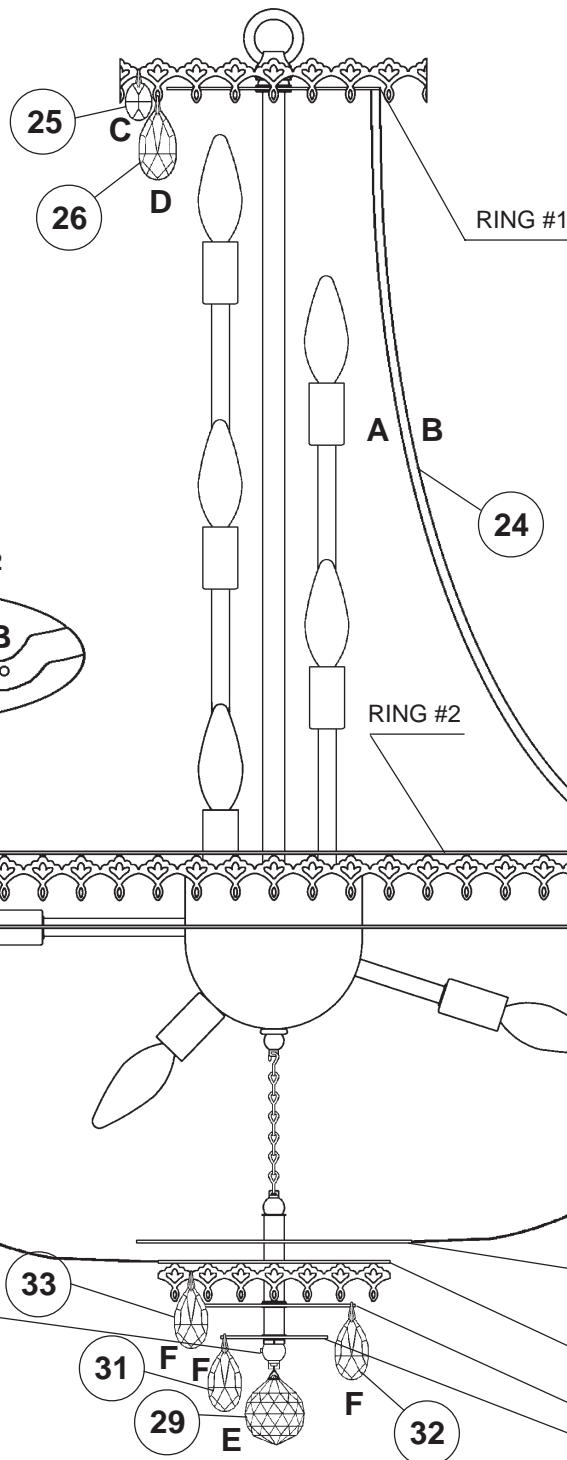
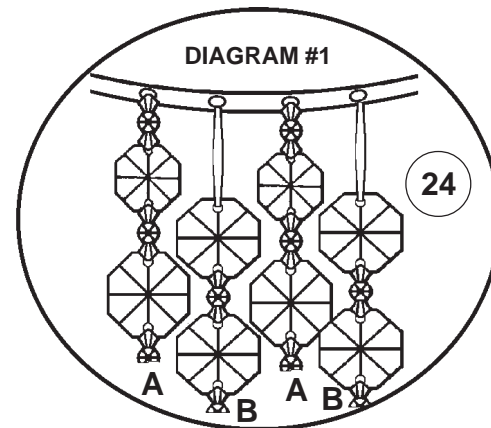


DIAGRAM #1



Small jewel at top and graduates to a  
larger jewel toward bottom of chain.

**NOTE:** Raise the large  
finial washer for easier  
installation of Chains "H".

