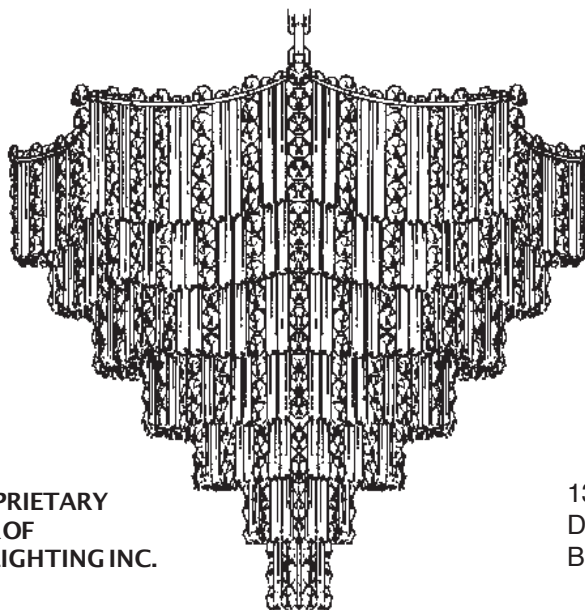


(Finish Option)



13 Lights
Diameter: 20-1/2"
Body Length: 18"

SCHONBEK®

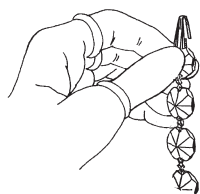
Do not clean crystals in a dishwasher. The finish of the metal clips and hangers will be ruined and the crystals may be damaged.

CODE # Four-digit number on outside of carton.

1 MAKE SURE POWER IS DISCONNECTED!!

2 Attach crossbar to outlet box.

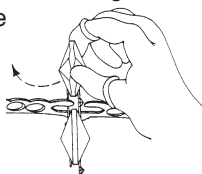
3 Slip screw collar, prismatic cover and metal canopy over chain. Determine the suspension length of the fixture and cut chain, if necessary. Use two connecting links to attach chain to chandelier loop and ceiling loop.



7 Perspiration or oil from fingers will smear the crystals, causing a loss of brilliance. ALWAYS USE FINGER COTS

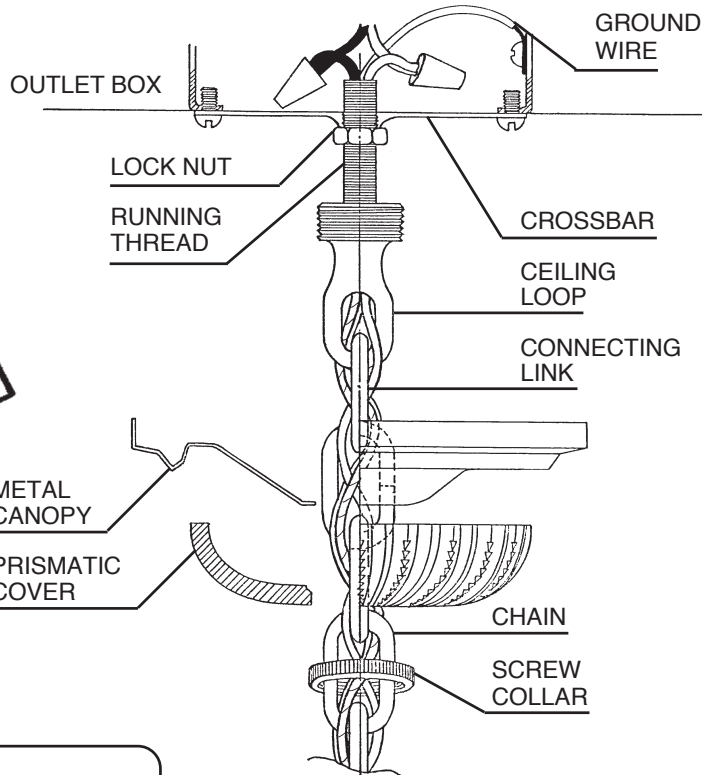
PROVIDED WHEN HANDLING CRYSTALS. Cots should be used on thumb, index and middle fingers of each hand.

10 Slide Chains "A" into the slots of the top gallery ring. NOTE: Hold onto the octagon and turn chain side ways, this will allow connector to pass through slot in metal ring. Turn octagon to face the outside of the fixture and lower it until it seats itself in the ring. Install 4" glass rods into ring #1. NOTE: Ring #1 has two glass rods between Chains "A".



8 Hook Chains "B" into pin holes on ring #7. Install 4" glass rods into ring #7. NOTE: Ring #7 has only one glass rod between Chains "B".

9 Repeat Step #7 for rings #6, #5, #4, #3 and #2. NOTE: Rings #6, #5, #4, #3 and #2 has two glass rods between Chains "B".



4 Insert stem wire through chain and ceiling loop. Connect wires. Fixture MUST be grounded.

5 Check distance from ceiling to loop to assure canopy assembly will be flush against ceiling.

6 Attach canopy to ceiling with screw collar. Screw bulbs into all socket(s). Test power to insure proper wiring before hanging trim from fixture.

SCHONBEK IS A WORLD LEADER IN CHANDELIER DESIGN. PATENTS INCLUDE: #D5,144,541 & #D5,222,805

