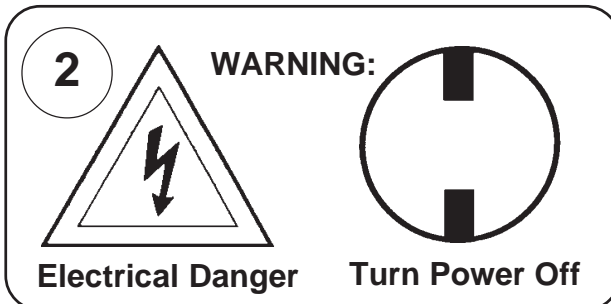
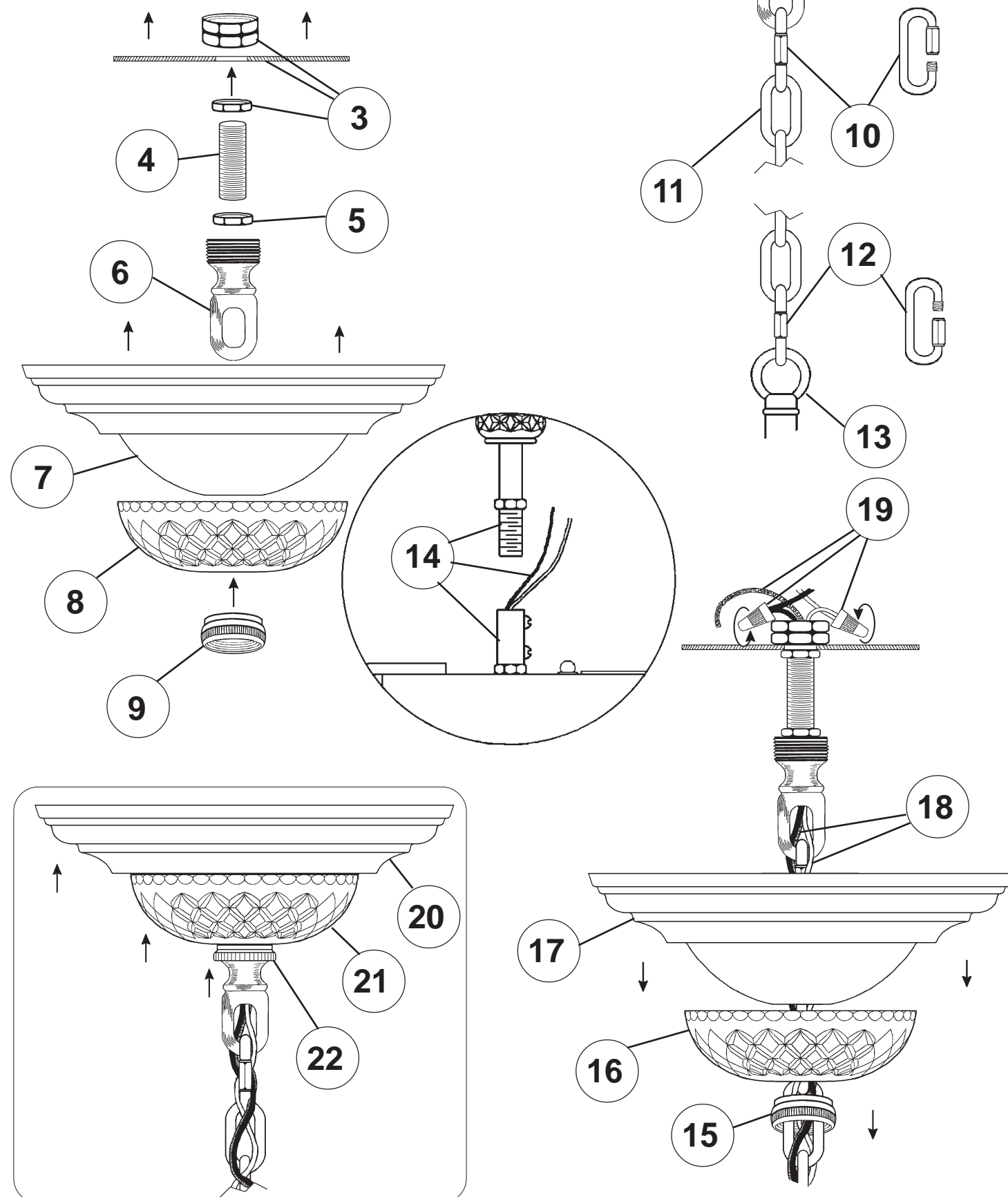


WARNING: THIS LUMINAIRE MUST BE MOUNTED OR SUPPORTED INDEPENDENTLY OF AN OUTLET BOX.

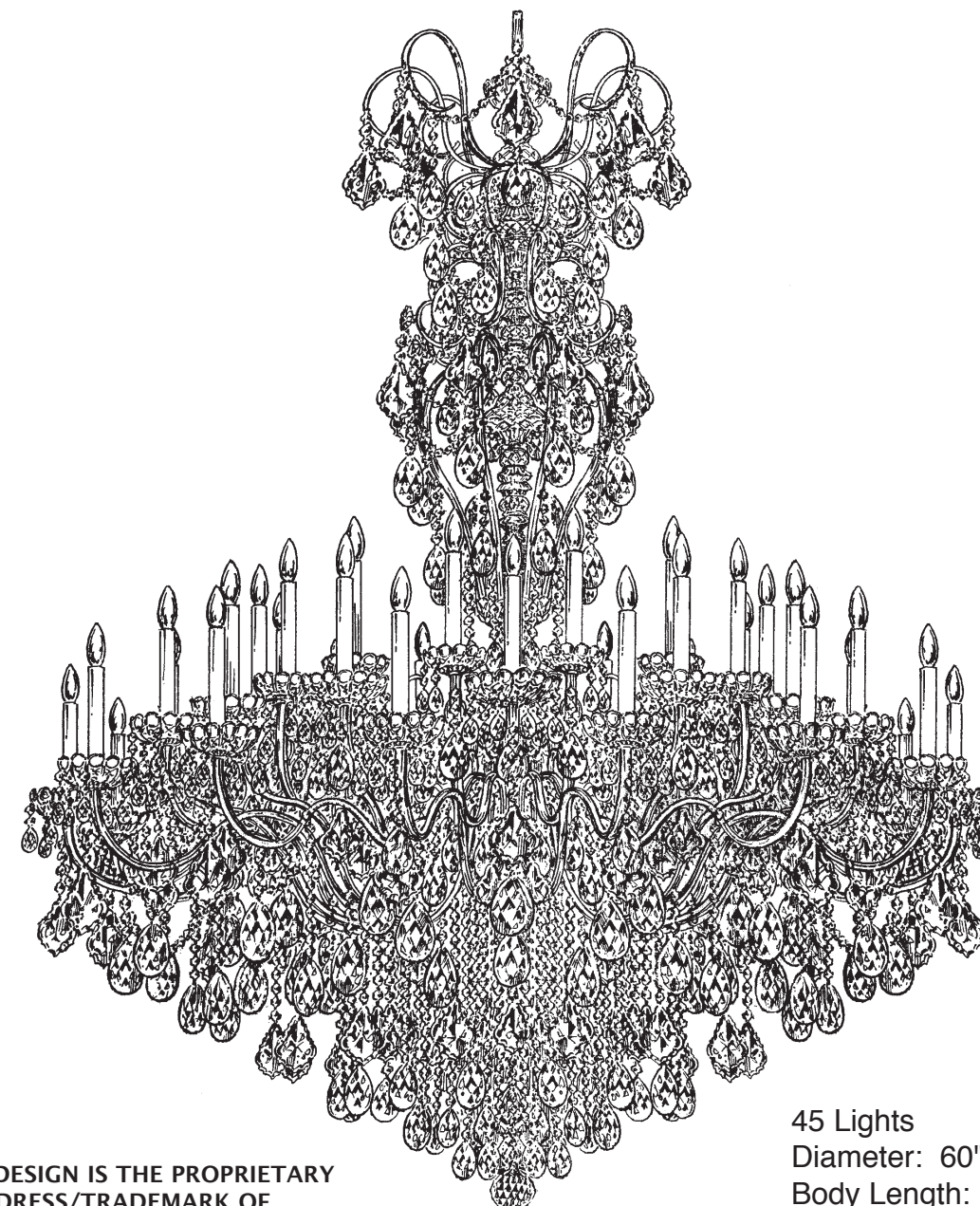
Instructions for electrician STEPS 2 - 22



All electrical components must be installed by a licensed electrician in accordance with the National Electric Code and the appropriate local electrical codes.



CHANDELIER 3663-____H (FINISH OPTION) TRIM DIAGRAM



THIS DESIGN IS THE PROPRIETARY TRADE DRESS/TRADEMARK OF SCHONBEK WORLDWIDE LIGHTING INC.

45 Lights
Diameter: 60"
Body Length: 75"
Hanging Weight: 160 lbs.

SCHONBEK®

See diagram on back page
Follow steps in exact order
Save this trim diagram for future reference

1

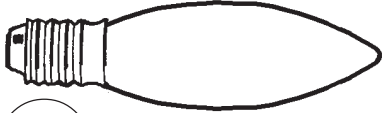
IMPORTANT

Please record the following information for future service.

CODE # _____ Four-digit number on outside of carton.
PACKER # _____ See crystal package label.
ORDER # _____ See crystal package label.

SCHONBEK IS A WORLD LEADER IN CHANDELIER DESIGN. PATENTS INCLUDE:
#D5,404,285, #D338,278 & #D345,815

Instructions for crystal trimming
STEPS 23 - 59



23 45 - B10
40 Watts Max
25 Watts Recommend

Install bulbs and be sure
to test fixture **BEFORE**
trimming.

NOTE

ALTERNATE:
STEP #33 J & K

**HANG
CRYSTAL
WITH FLAT
SIDE FACING
FRONT**

