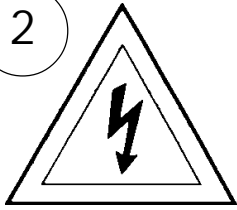
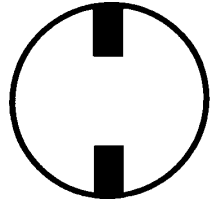


Instructions for electrician STEPS 2 - 9

WARNING:

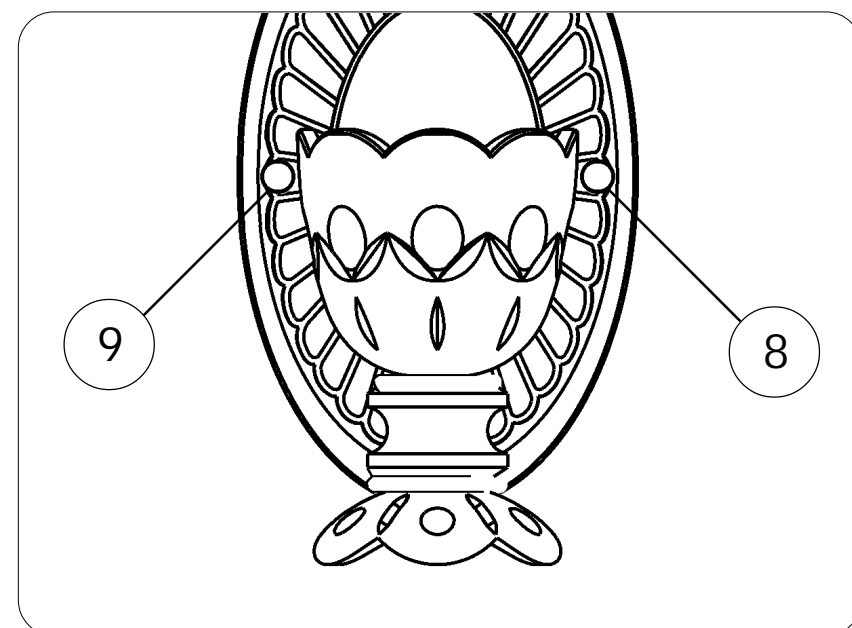
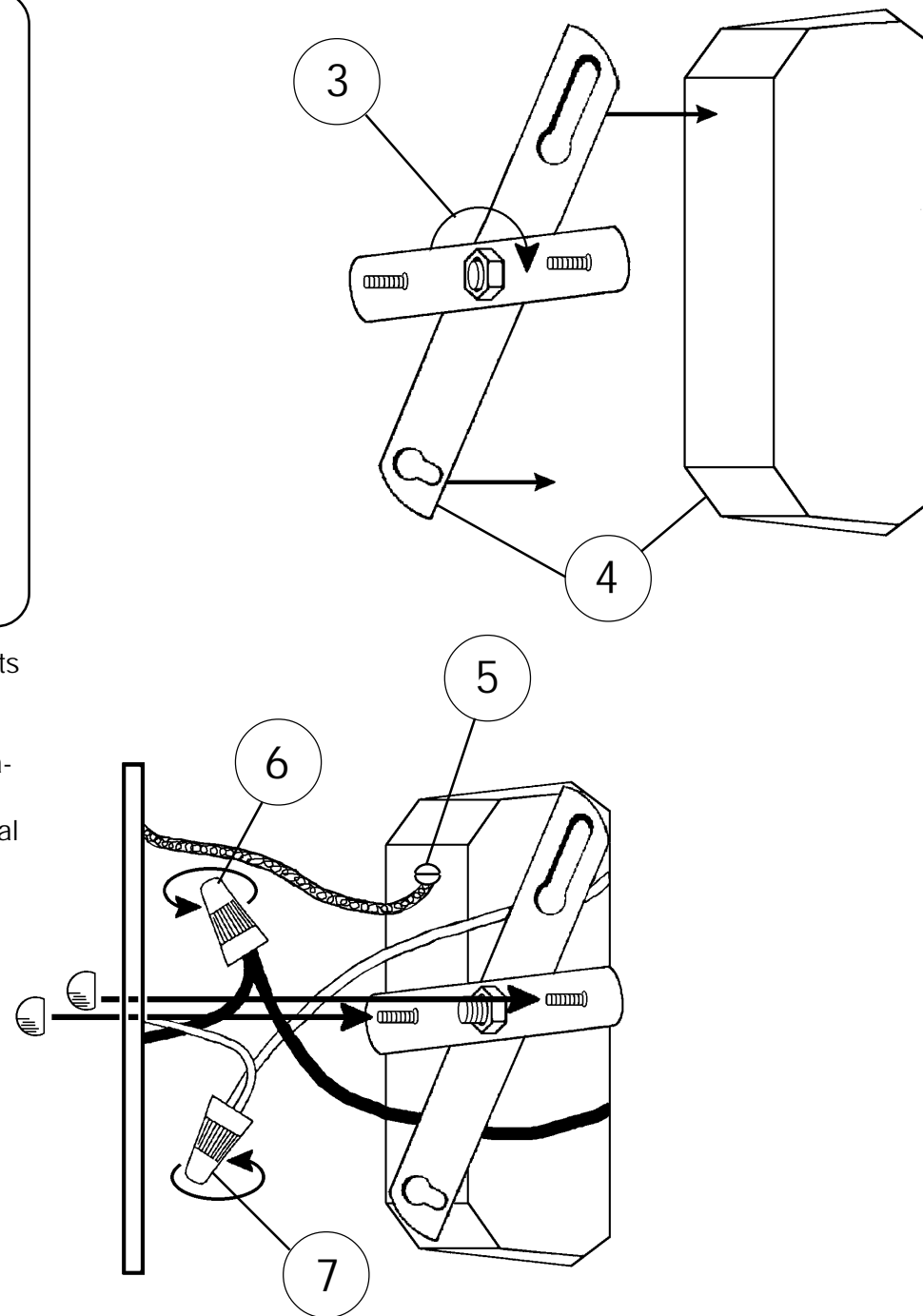


Electrical Danger



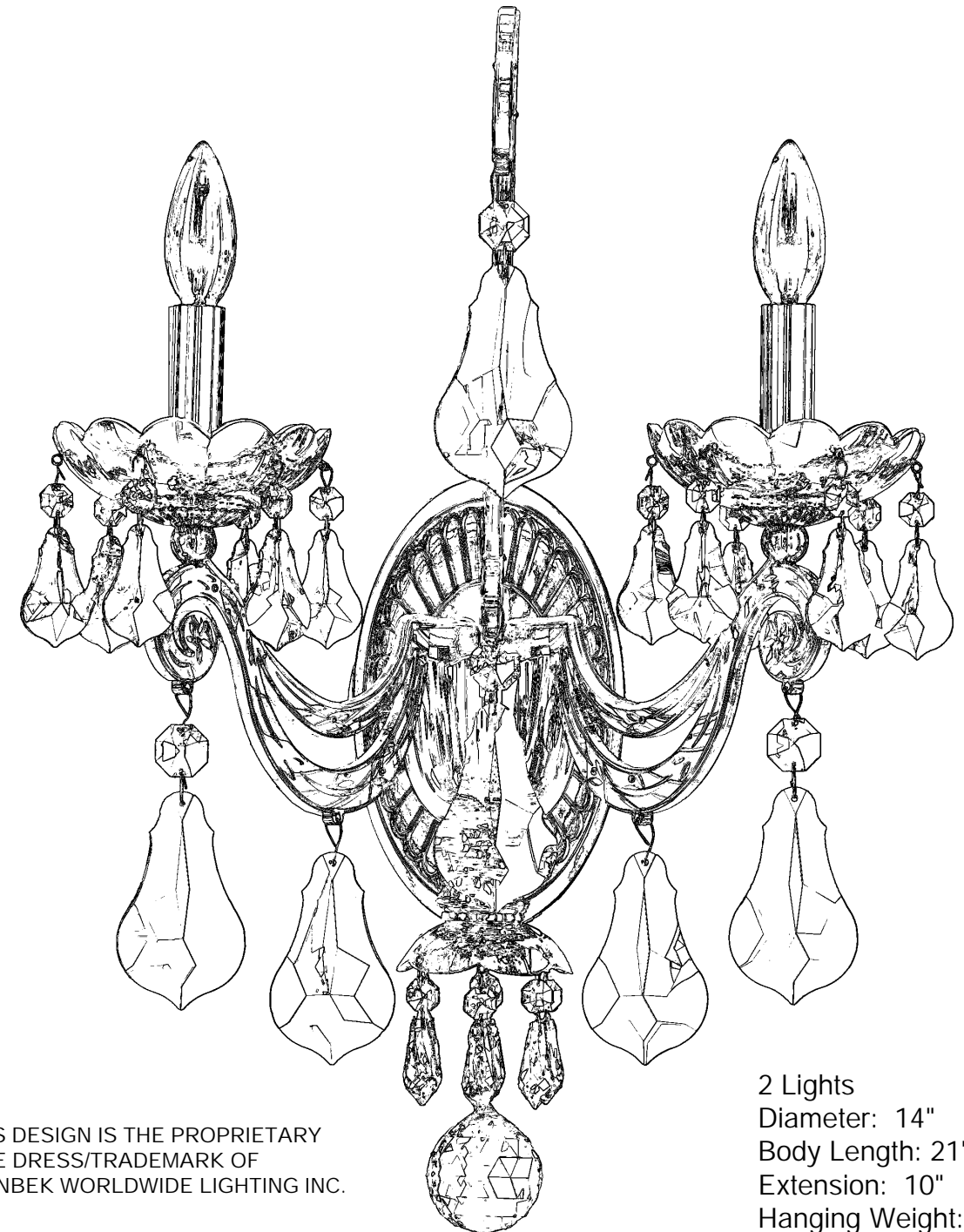
Turn Power Off

All electrical components must be installed by a licensed electrician in accordance with the National Electric Code and the appropriate local electrical codes.



CHANDELIER 5331- _____ TRIM DIAGRAM

(Finish Option) (Trim Option)



THIS DESIGN IS THE PROPRIETARY
TRADE DRESS/TRADEMARK OF
SCHONBEK WORLDWIDE LIGHTING INC.

2 Lights
Diameter: 14"
Body Length: 21"
Extension: 10"
Hanging Weight: 6lbs.

SCHONBEK®

See diagram on back page
Follow steps in exact order
Save this trim diagram for future reference

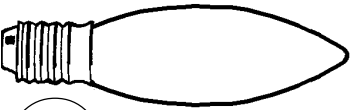
1

IMPORTANT

Person who opens carton should record the following information for future service.

CODE # _____ Four-digit number on outside of carton.
PACKER # _____ See crystal package label.
ORDER # _____ See crystal package label.

Instructions for crystal trimming
STEPS 10 - 18

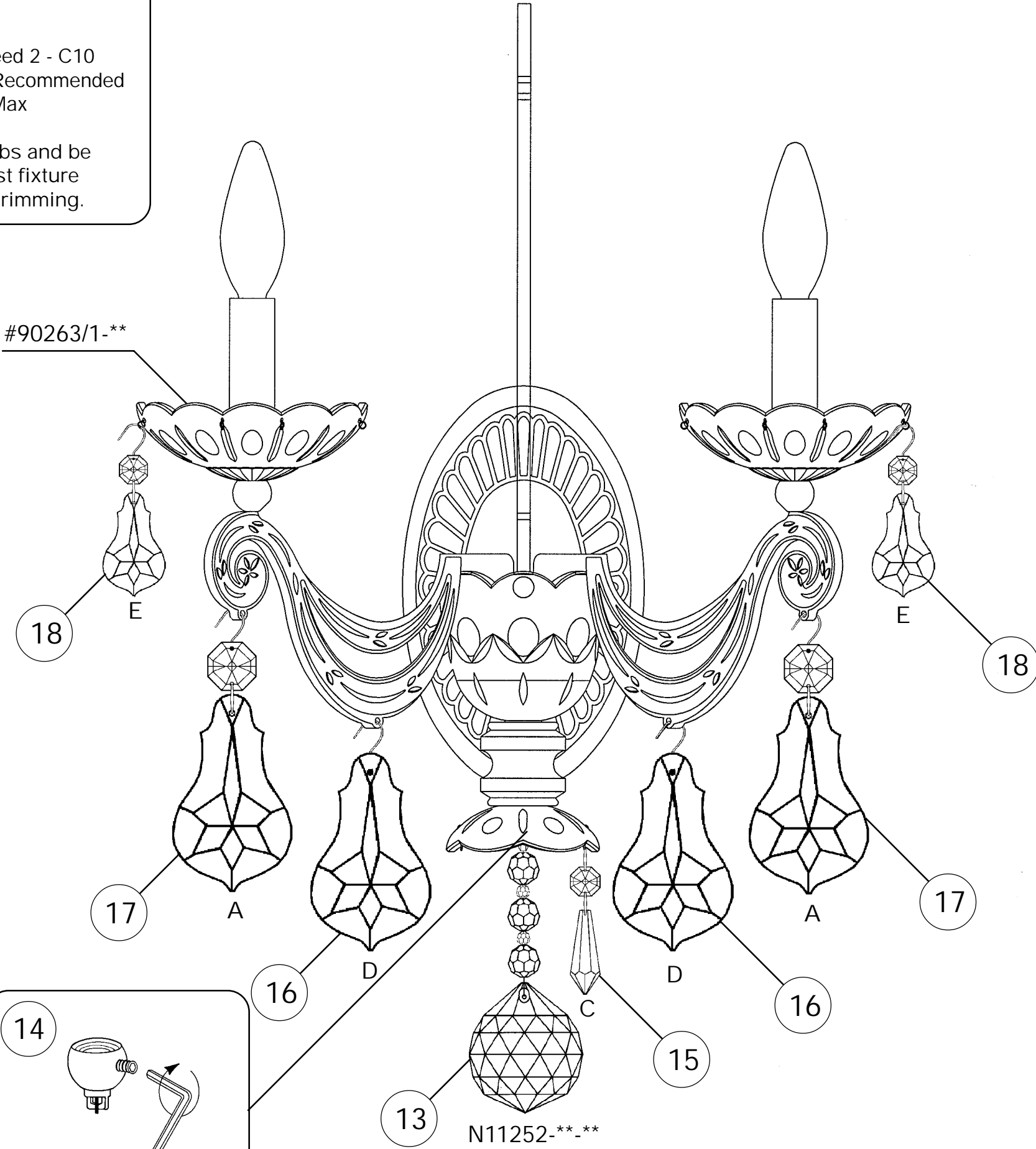


10

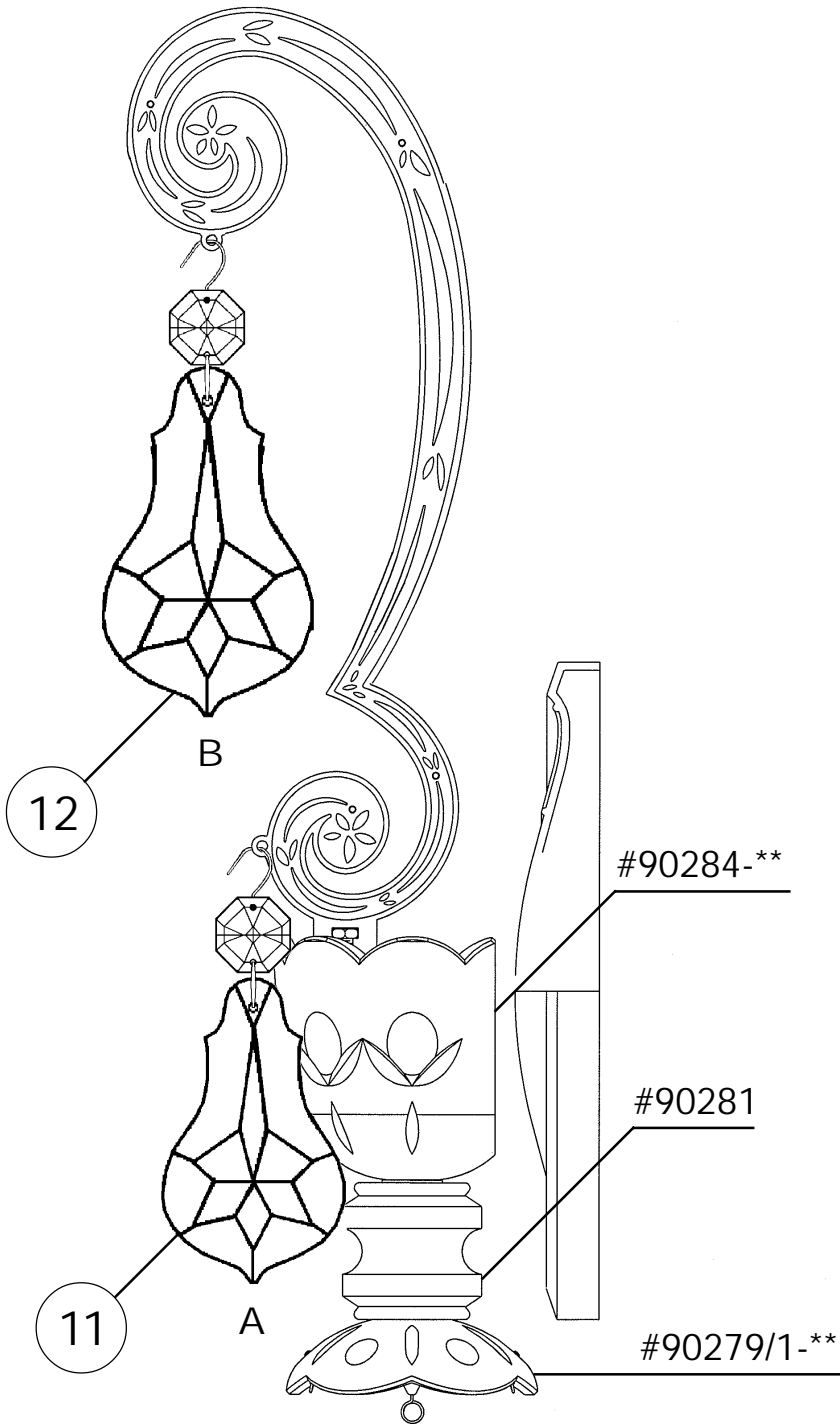
You will need 2 - C10
25 Watts Recommended
60 Watts Max

Install bulbs and be
sure to test fixture
BEFORE trimming.

FRONT VIEW



SIDE VIEW



FIXTURE INCLUDES:
Hanger Hardware
Trim - Frame

DOES NOT INCLUDE:
C10 - Light Bulbs

