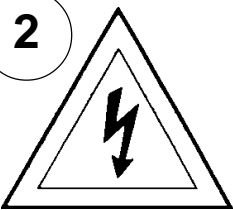


Instructions for electrician STEPS 2 - 18

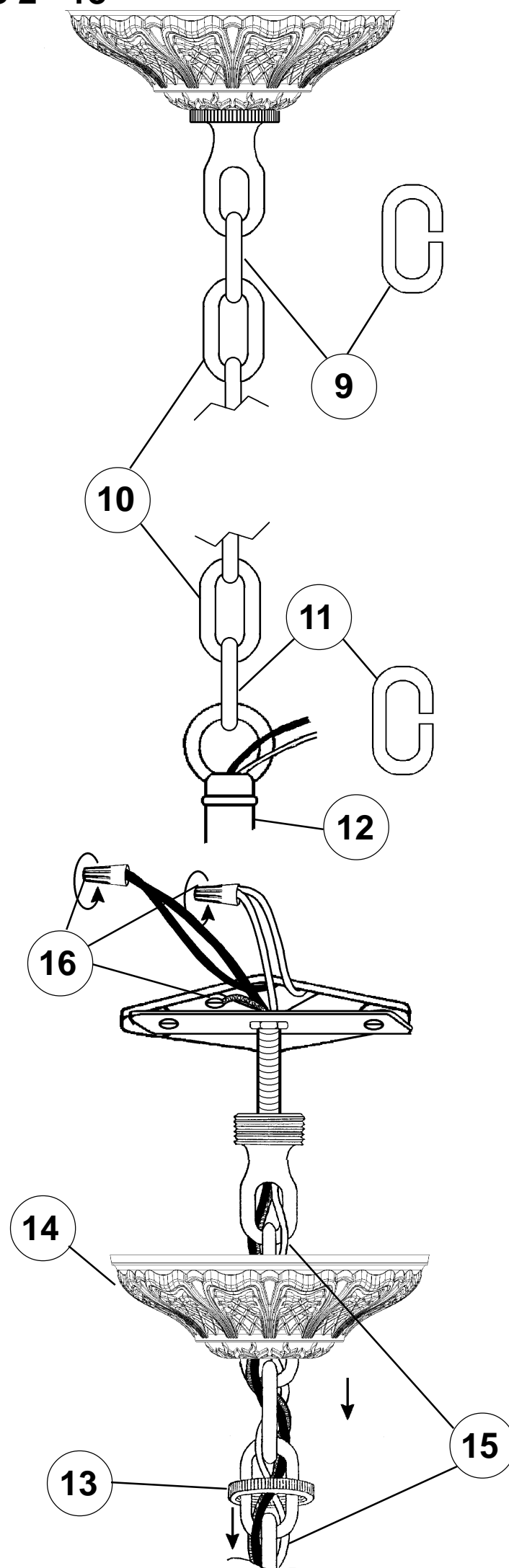
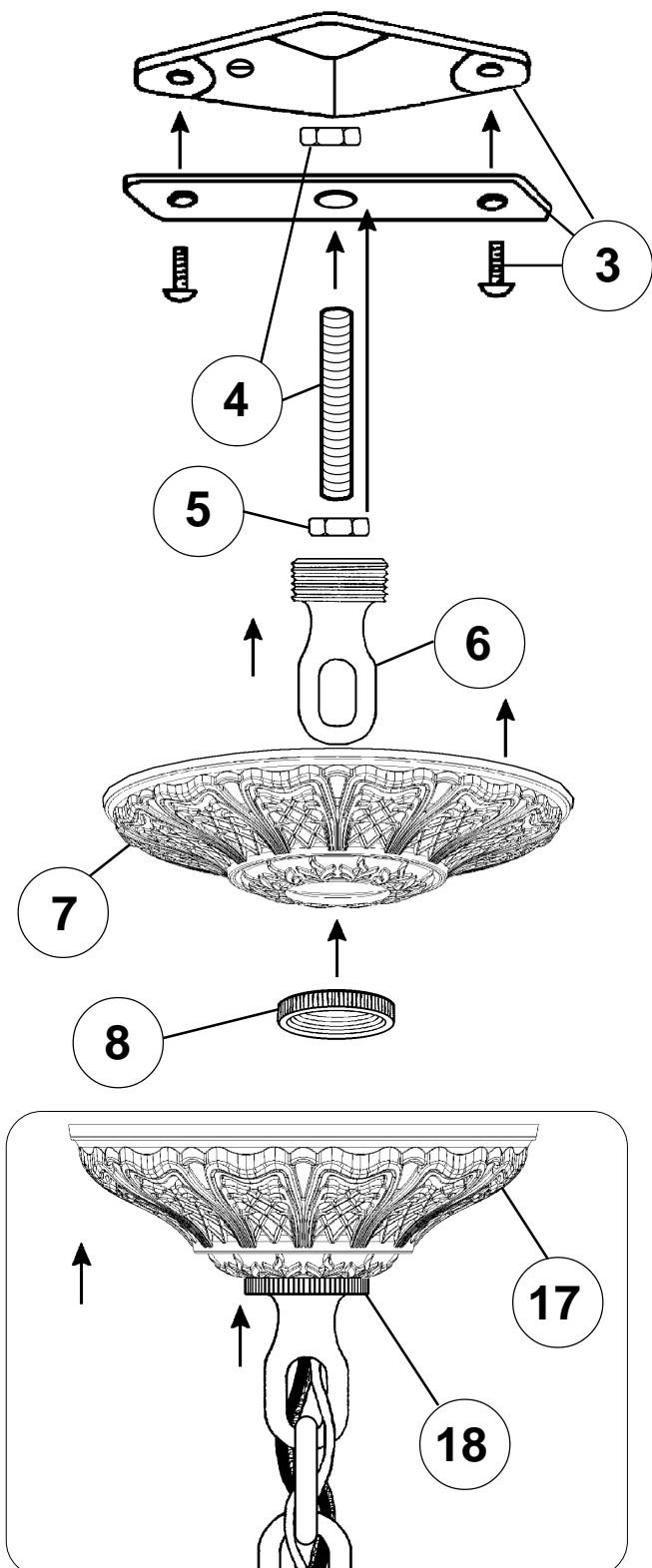
WARNING:



Electrical Danger

Turn Power Off

All electrical components must be installed by a licensed electrician in accordance with the National Electric Code and the appropriate local electrical codes.



CHANDELIER 5691- (Finish Option) (Trim Option) TRIM DIAGRAM



THIS DESIGN IS THE PROPRIETARY
TRADE DRESS/TRADEMARK OF
SCHONBEK WORLDWIDE LIGHTING INC.

6 + 3 Lights
Diameter: 23"
Body Length: 27"
Hanging Weight: 18lbs.

SCHONBEK®

See diagram on back page
Follow steps in exact order
Save this trim diagram for future reference

1

IMPORTANT

Person who opens carton should record the following information for future service.

CODE # _____ Four-digit number on outside of carton.
PACKER # _____ See crystal package label.
ORDER # _____ See crystal package label.

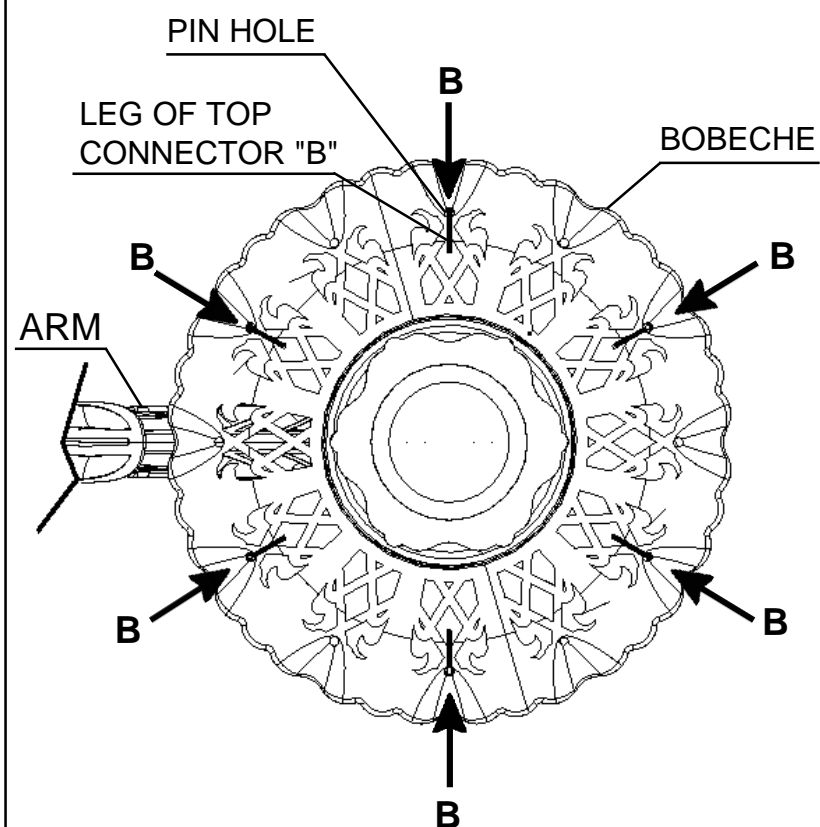
Instructions for crystal trimming STEPS 19 - 28



You will need 9 - B10
25 Watts Recommended
60 Watts Max

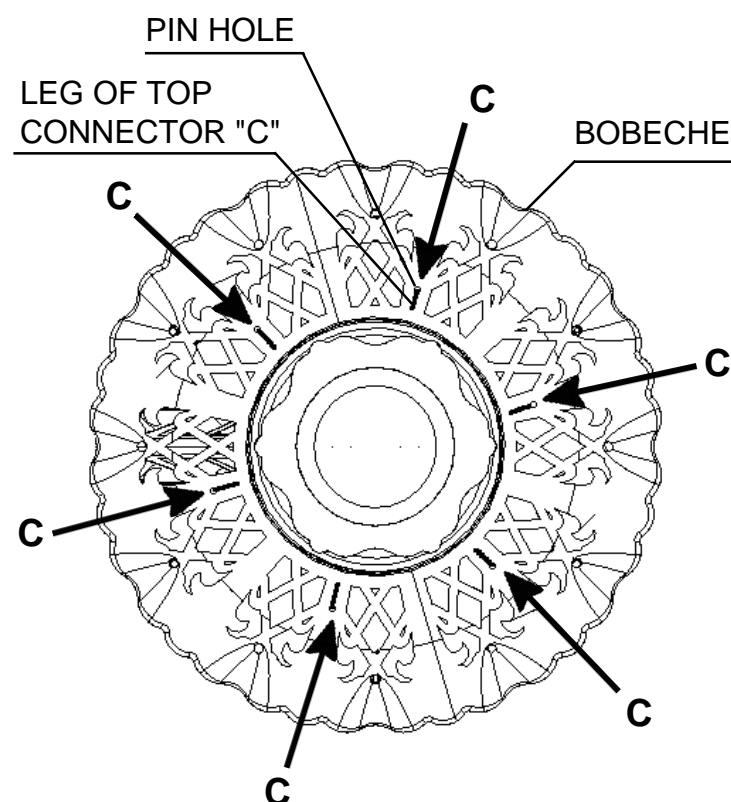
Install bulbs and be
sure to test fixture
BEFORE trimming.

DIAGRAM #1



When trimming bobèche with letter "B", insert leg of top connector into pin hole from under bobèche. Hang in every other pin hole starting on either side of the arm (refer to Diagram #1)

DIAGRAM #2



When trimming bobèche with letter "C", insert leg of top connector into pin hole from under bobèche. (refer to Diagram #2)

Note:
When trimming bobèche(s)
with letters "A" and "B",
insert leg of top connector
into every other pin hole
from under bobèche.
(Similar to Diagram #1;
start with any pin hole.)

