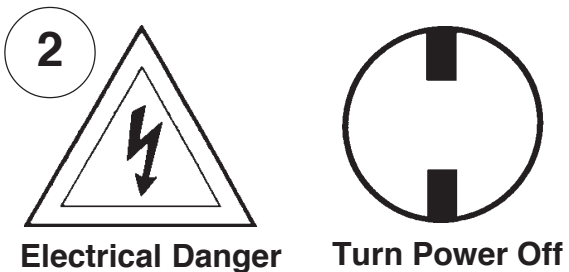
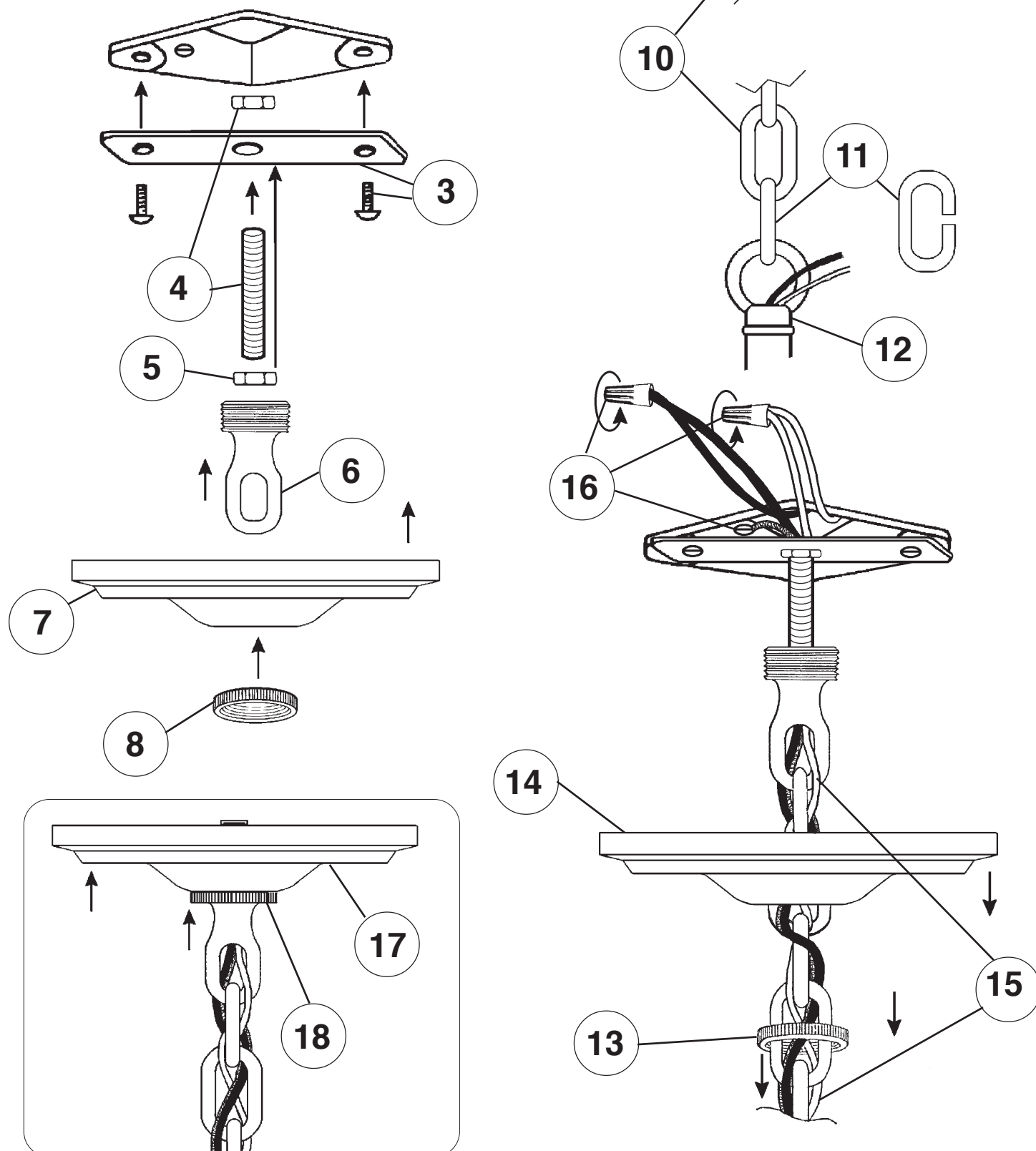


Instructions for electrician STEPS 2 - 18

WARNING:



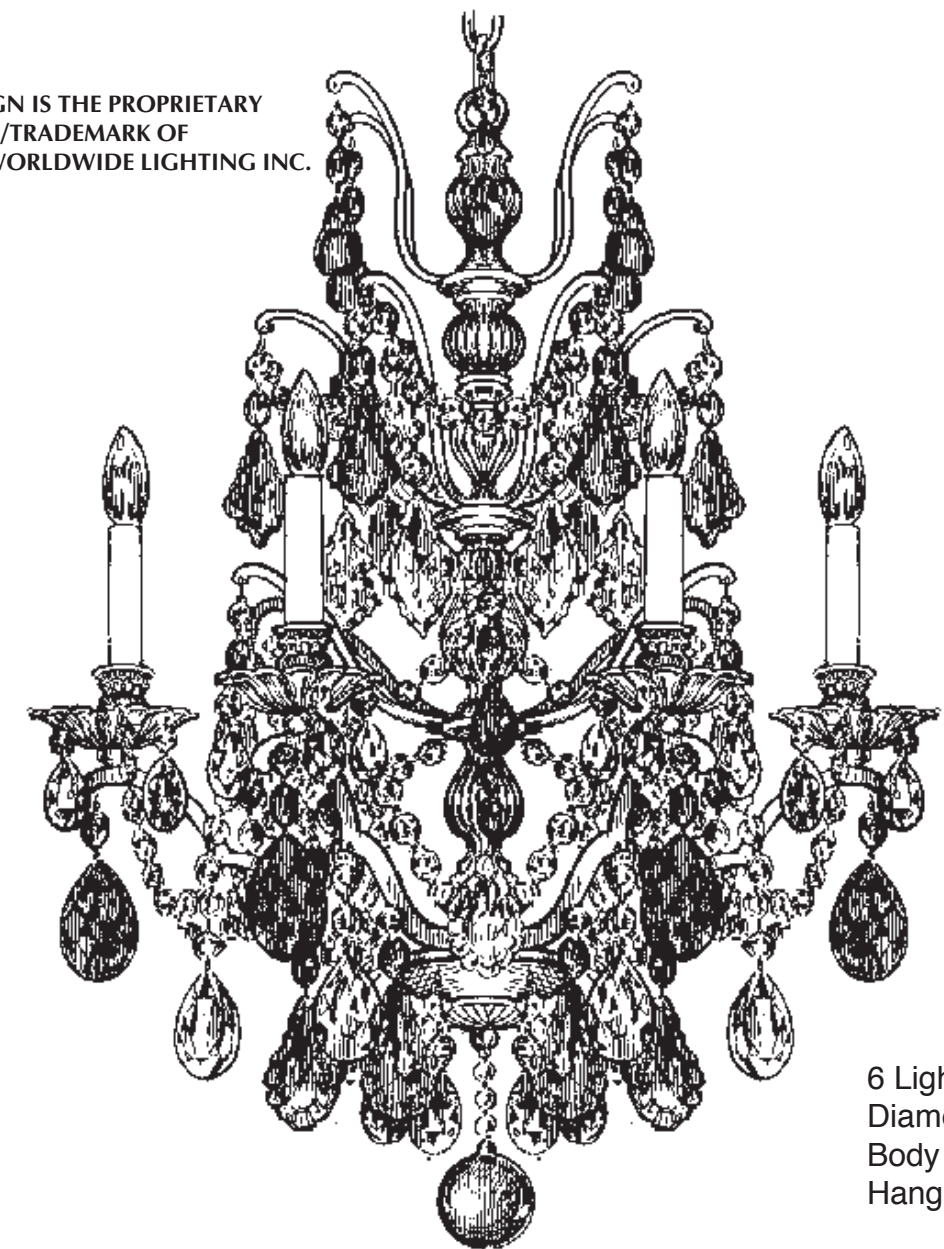
All electrical components must be installed by a licensed electrician in accordance with the National Electric Code and the appropriate local electrical codes.



CHANDELIER 5770- _____ TRIM DIAGRAM

(Finish Option) (Trim Option)

THIS DESIGN IS THE PROPRIETARY TRADE DRESS/TRADEMARK OF SCHONBEK WORLDWIDE LIGHTING INC.



6 Lights
Diameter: 22"
Body Length: 29"
Hanging Weight: 16 lbs.

SCHONBEK®

See diagram on back page
Follow steps in exact order
Save this trim diagram for future reference

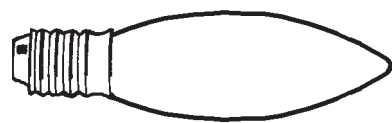
IMPORTANT

1 *Person who opens carton should record the following information for future service.*

CODE # _____	Four-digit number on outside of carton.
PACKER # _____	See crystal package label.
ORDER # _____	See crystal package label.

SCHONBEK IS A WORLD LEADER IN CHANDELIER DESIGN. PATENTS INCLUDE:
#D5,222,805

Instructions for crystal trimming STEPS 19 - 33



19

You will need 6 - C10
25 Watts Recommended
60 Watts Max

SCROLL #1

20

A

#9312

#9313/1

#9313/1

How to trim Bordeaux in Jewel Tones™ (Be Creative!)

When hanging the colored crystal, attach each color randomly. Colors are meant to alternate so just avoid hanging crystals of the same color next to each other.

SCROLL #2

23

SCROLL #2 TO
SCROLL #2

D

22

21

B

#9312/1

SCROLL #3

SCROLL #3 TO
SCROLL #3

26

F

25

A

#9313/1

#9312

24

E

N

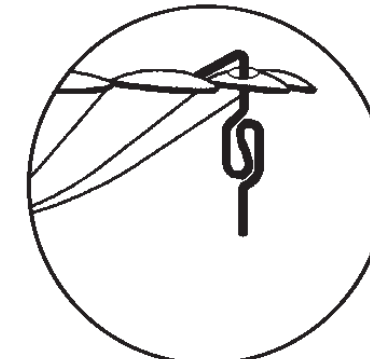
33

M

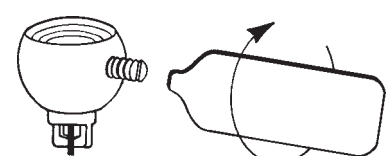
32

ARM TO ARM

STEPS #32 & #33



Insert hook under and
up into bobèche to
hang letters "M" & "N".



Tighten With
Tool Provided.

27

N1224

H

28

29

J

30

31

