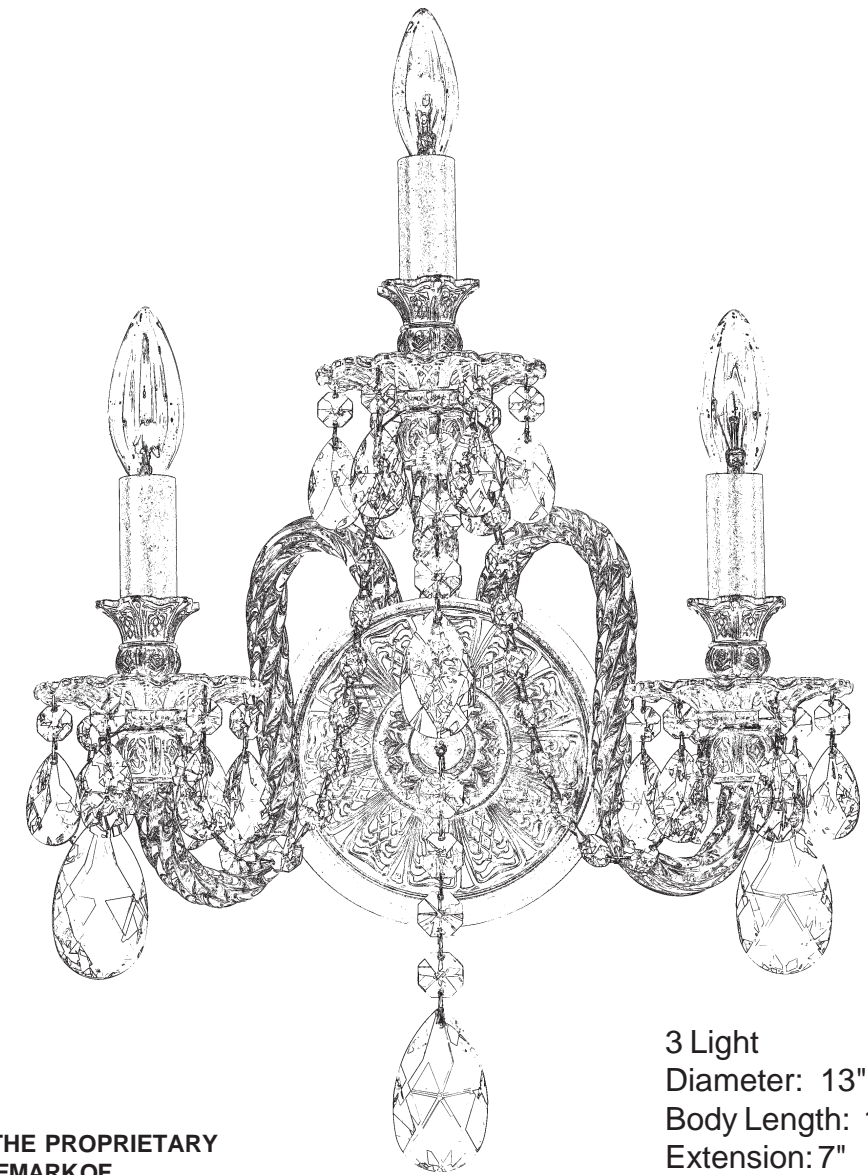


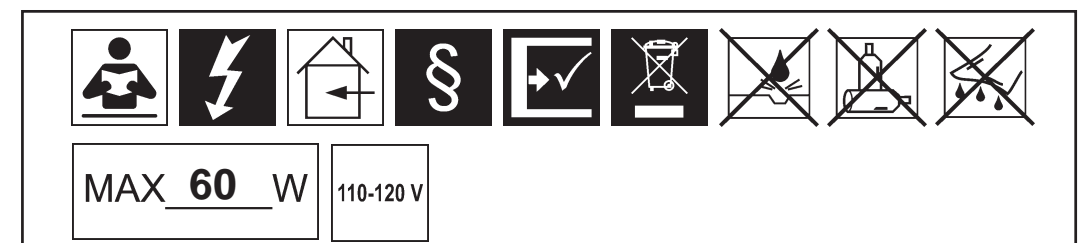


ISABELLE 6303- __ __A



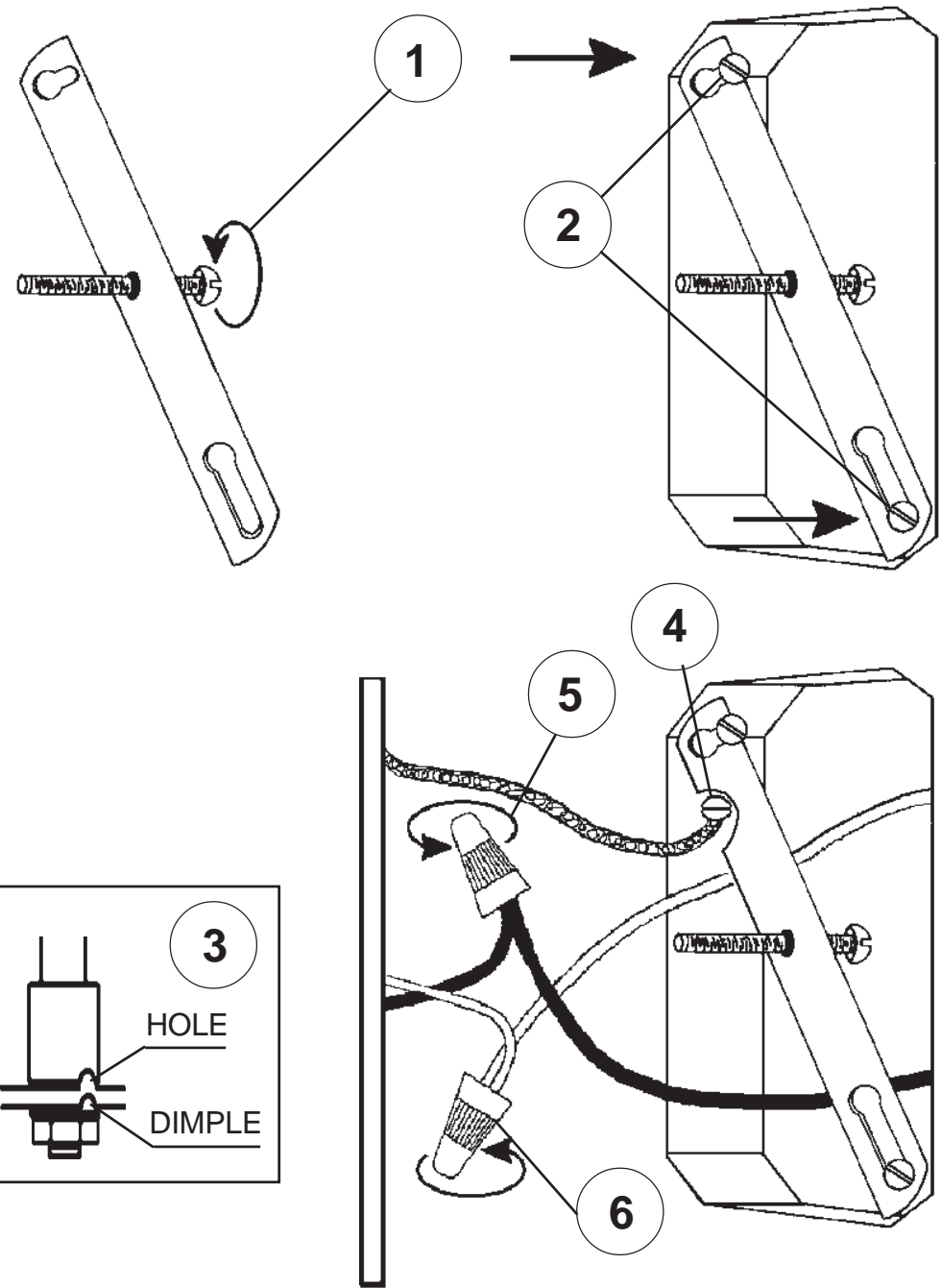
THIS DESIGN IS THE PROPRIETARY
TRADE DRESS/TRADE MARK OF
SWAROVSKI LIGHTING, LTD.

3 Light
Diameter: 13"
Body Length: 18-1/2"
Extension: 7"
Hanging Weight: 3 lbs.

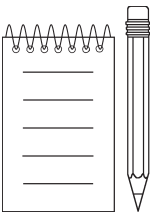
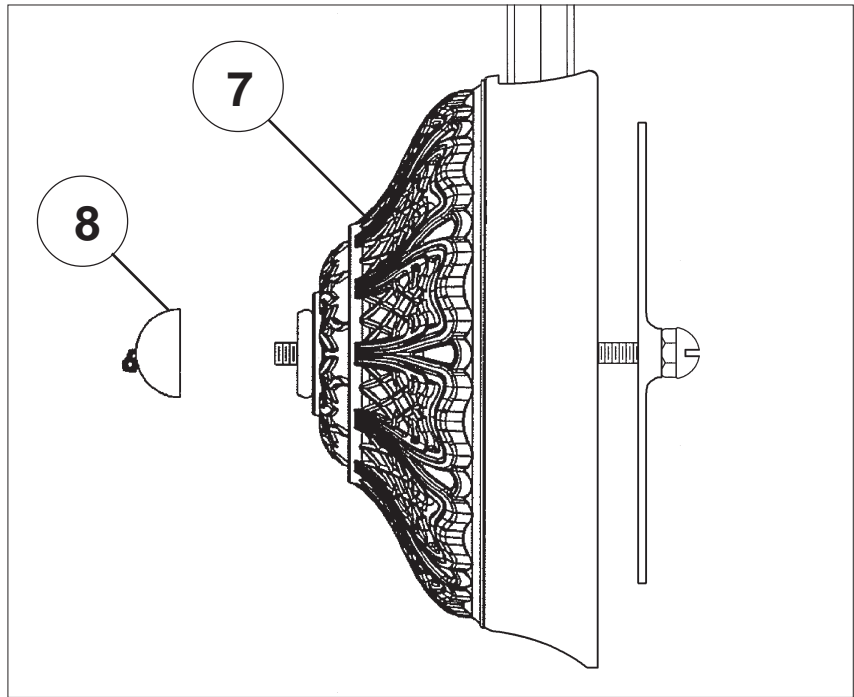


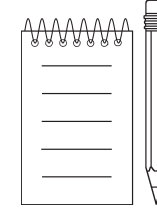
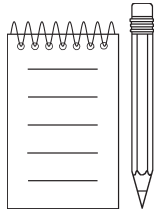
SCHONBEK® is a member of the Swarovski group.

All electrical components must be installed by a licensed electrician in accordance with the National Electric Code and the appropriate local electrical codes.



Turn arms and scroll to line up holes in arms and scroll with dimples in plate. Tighten lock washer and nut to secure arms and scroll in place.





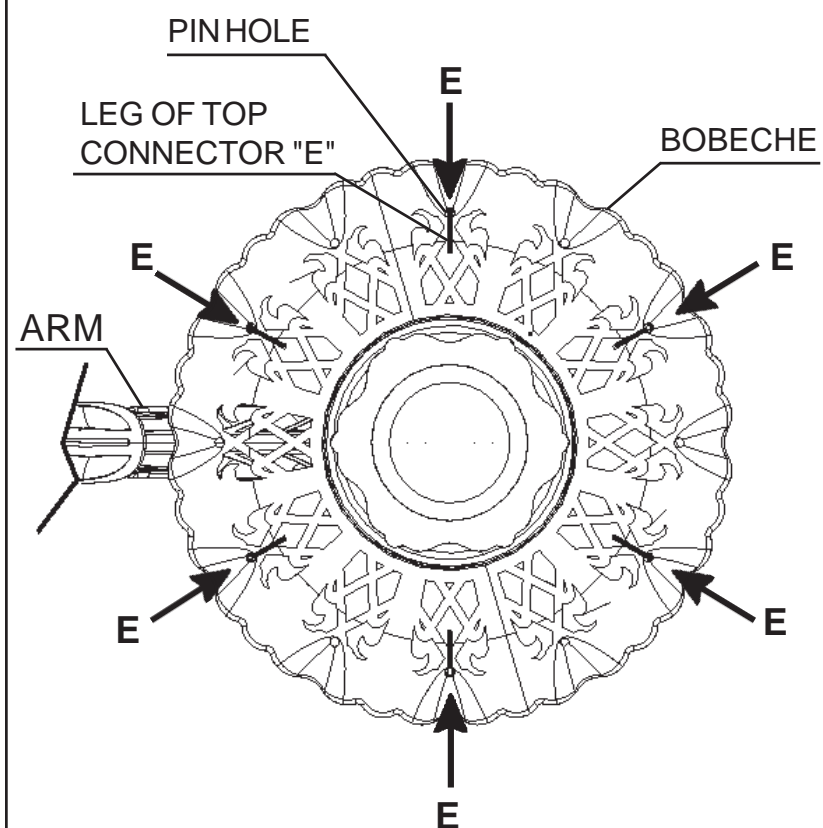


9

You will need 3 - B10
25 Watts Recommended
60 Watts Max

Install bulbs and be sure
to test fixture **BEFORE**
trimming.

DIAGRAM #1



When trimming bobeche with letter "E", insert leg of top connector into pin hole from under bobeche. Hang in every other pin hole starting on either side of the arm (refer to Diagram #1)

CAUTION:

Glass parts are fragile. To Avoid
breakage use care when assem-
bling or cleaning.

