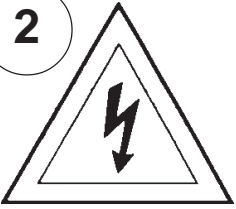


## Instructions for electrician STEPS 2 - 21

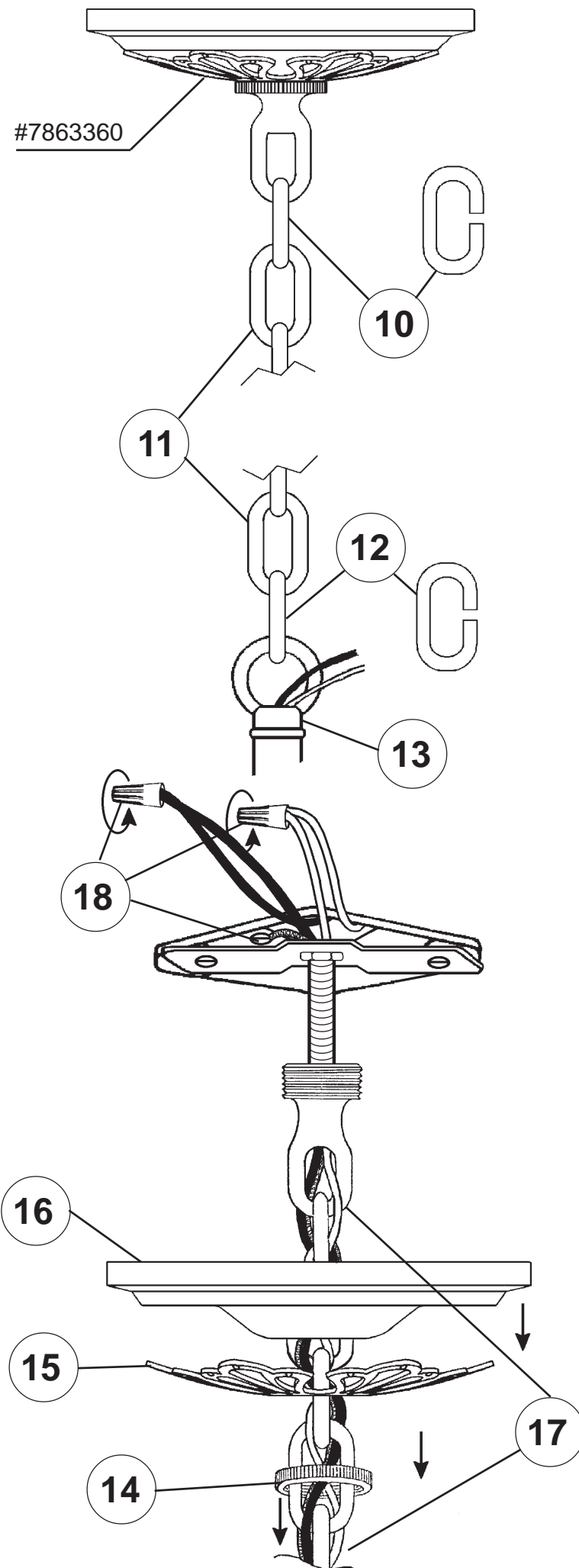
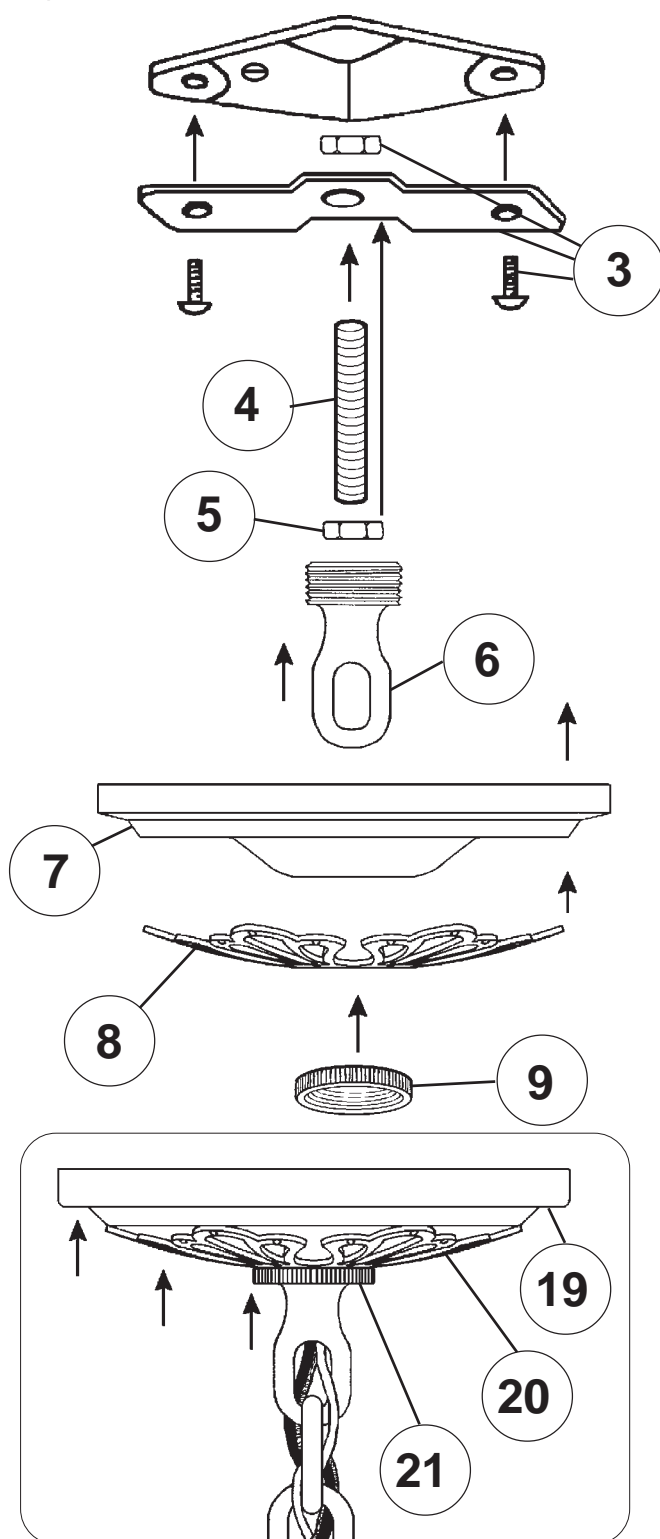
### WARNING:



Electrical Danger

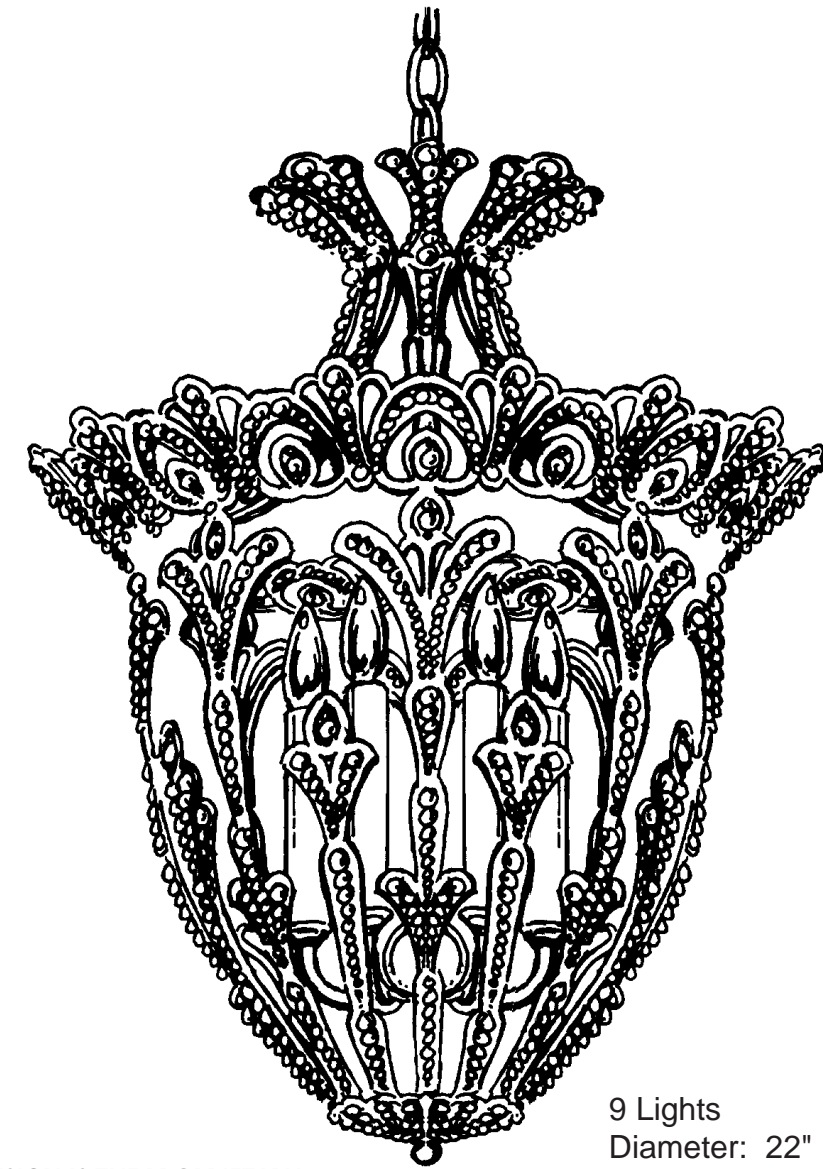
Turn Power Off

All electrical components must be installed by a licensed electrician in accordance with the National Electric Code and the appropriate local electrical codes.



## CHANDELIER 6716-\_\_\_\_ A TRIM DIAGRAM

(Finish Option)



THIS DESIGN IS THE PROPRIETARY  
TRADE DRESS/TRADEMARK OF  
SCHONBEK WORLDWIDE LIGHTING INC.

9 Lights  
Diameter: 22"  
Body Length: 29"  
Hanging Weight: 13 lbs.

# SCHONBEK®

See diagram on back page  
Follow steps in exact order  
Save this trim diagram for future reference

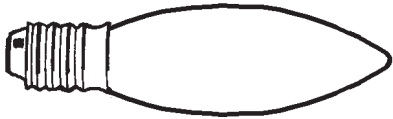
### IMPORTANT

1 Person who opens carton should record the following information for future service.

CODE # \_\_\_\_\_ Four-digit number on outside of carton.  
PACKER # \_\_\_\_\_ See crystal package label.  
ORDER # \_\_\_\_\_ See crystal package label.

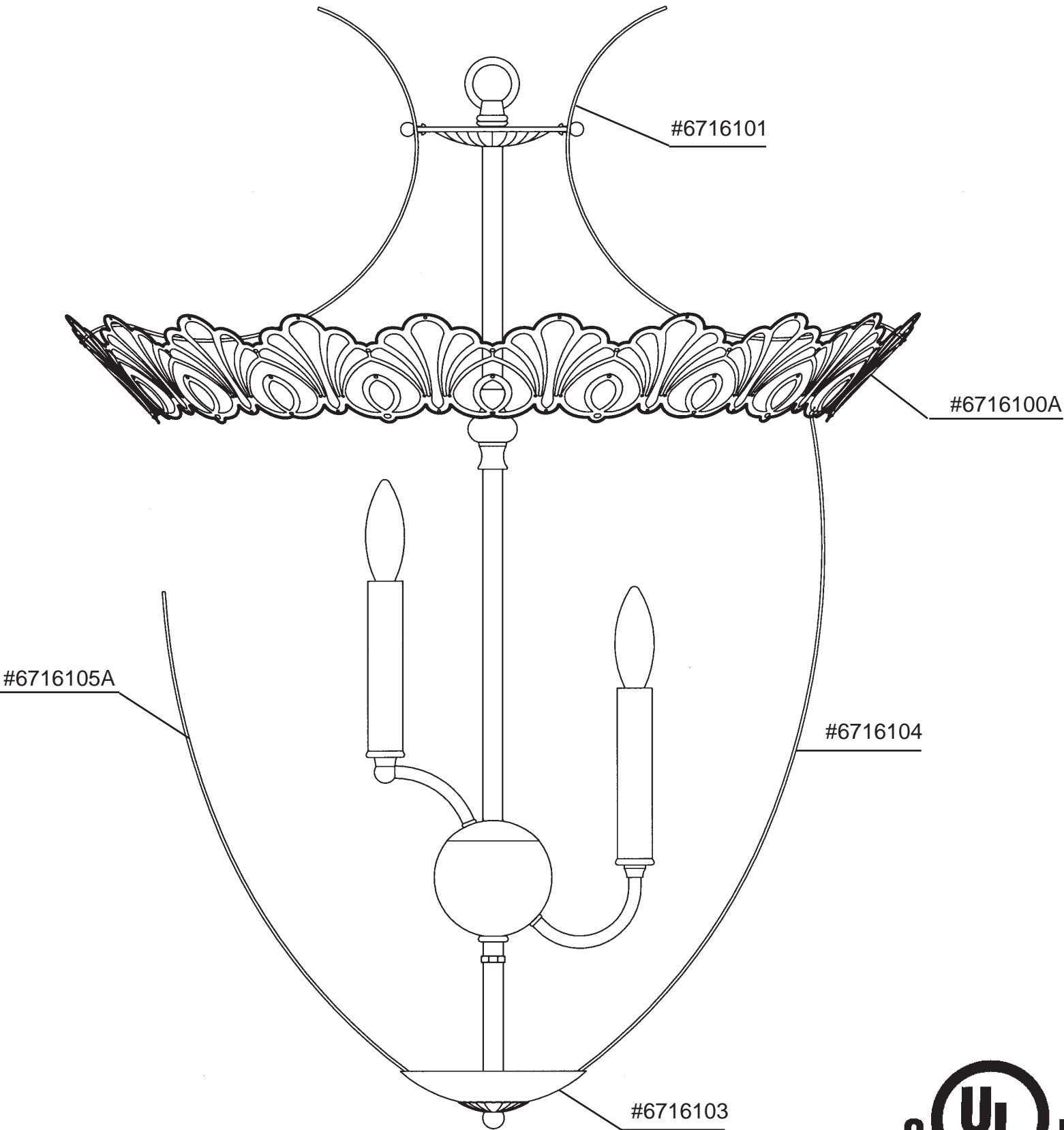
SCHONBEK IS A WORLD LEADER IN CHANDELIER DESIGN. PATENTS INCLUDE:  
#D397,495

Instructions for crystal trimming  
STEP 22



22

You will need 9 - C10  
25 Watts Recommended  
60 Watts Max



PART NUMBERS  
FOR SPARE PARTS

