

Instructions for electrician
STEPS 2 - 9

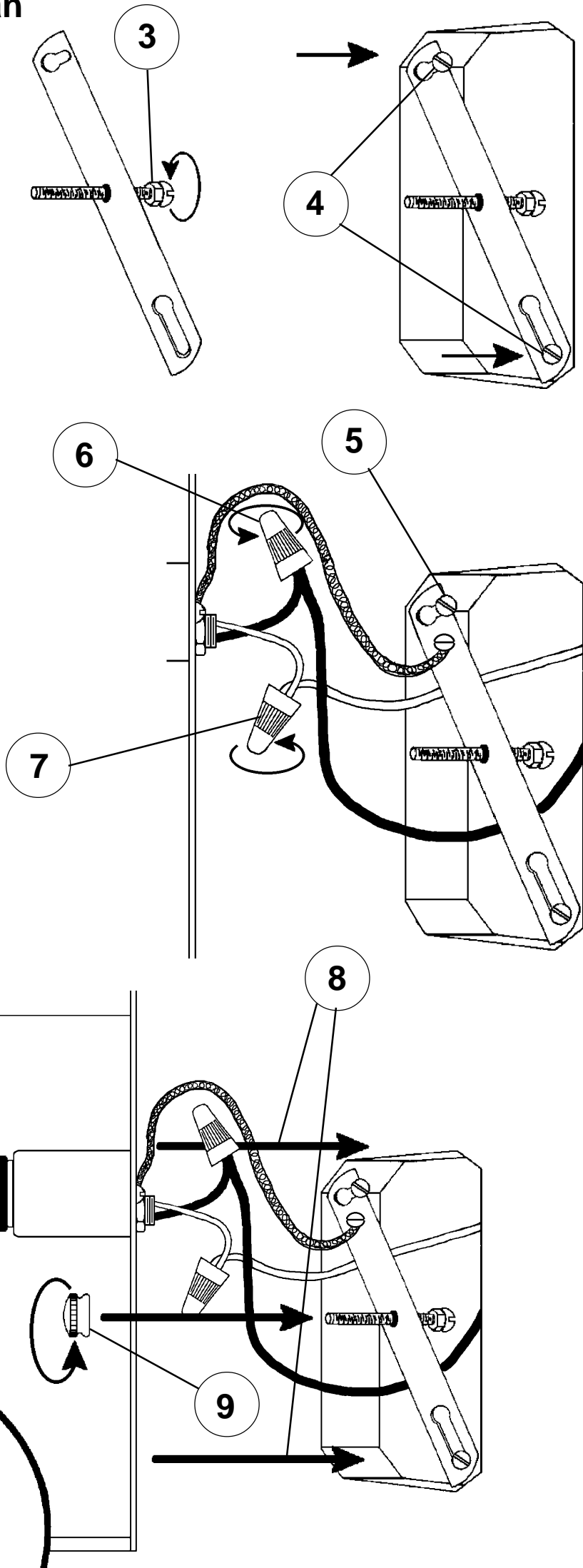
2

WARNING:

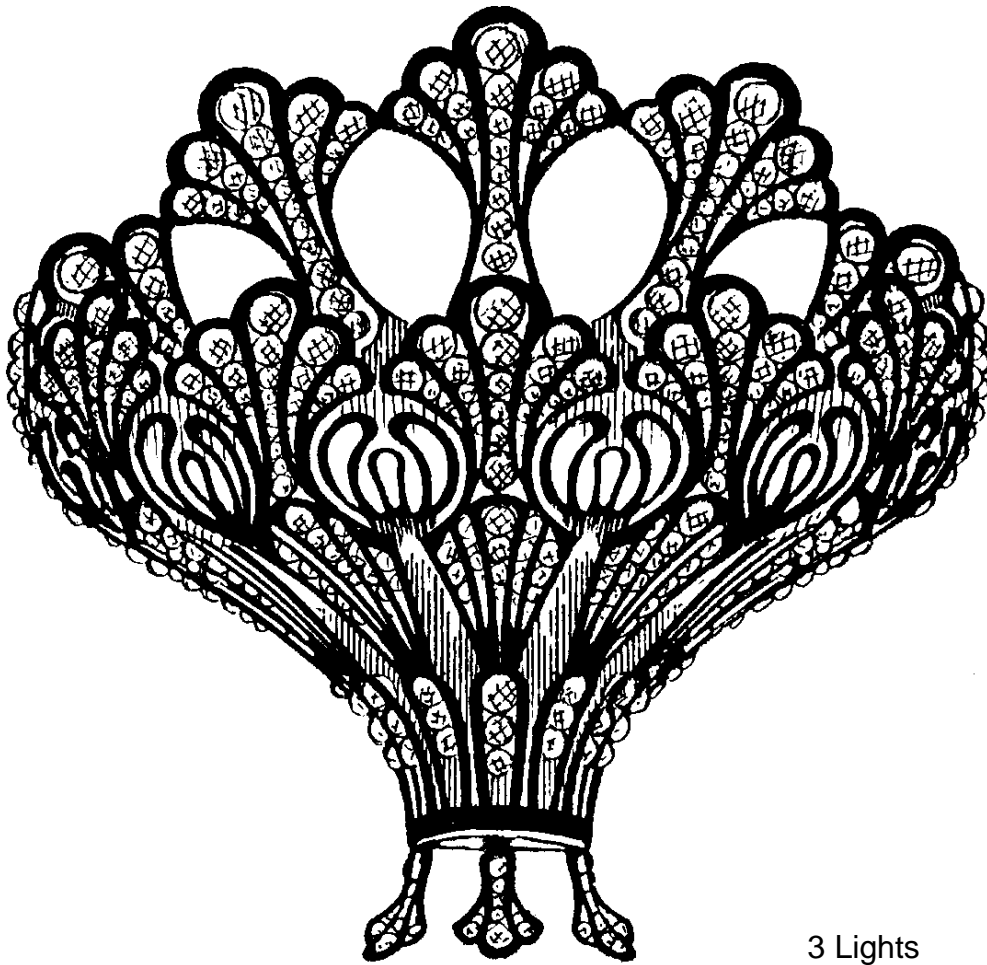
Electrical Danger

Turn Power Off

All electrical components must be installed by a licensed electrician in accordance with the National Electric Code and the appropriate local electrical codes.



CHANDELIER 7854-____ A TRIM DIAGRAM
(Finish Option)



3 Lights
Diameter: 12"
Body Length: 12"
Extension: 6"
Hanging Weight: 3 lbs.

THIS DESIGN IS THE PROPRIETARY
TRADE DRESS/TRADEMARK OF
SCHONBEK WORLDWIDE LIGHTING INC.

SCHONBEK®

See diagram on back page
Follow steps in exact order
Save this trim diagram for future reference

1

IMPORTANT

Person who opens carton should record the following information for future service.

CODE # _____

Four-digit number on outside of carton.

PACKER # _____

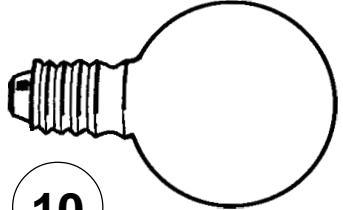
See crystal package label.

ORDER # _____

See crystal package label.

SCHONBEK IS A WORLD LEADER IN CHANDELIER DESIGN. PATENTS INCLUDE:
#D397,494

Instructions for crystal trimming
STEP 10



10

You will need 3 - G16-1/2
25 Watts Recommended
40 Watts Max

