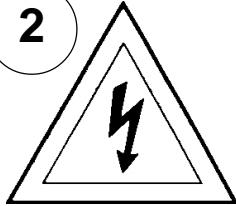


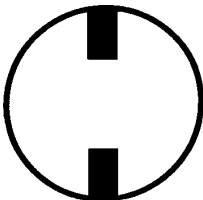
Instructions for electrician
STEPS 2 - 9

WARNING:

2

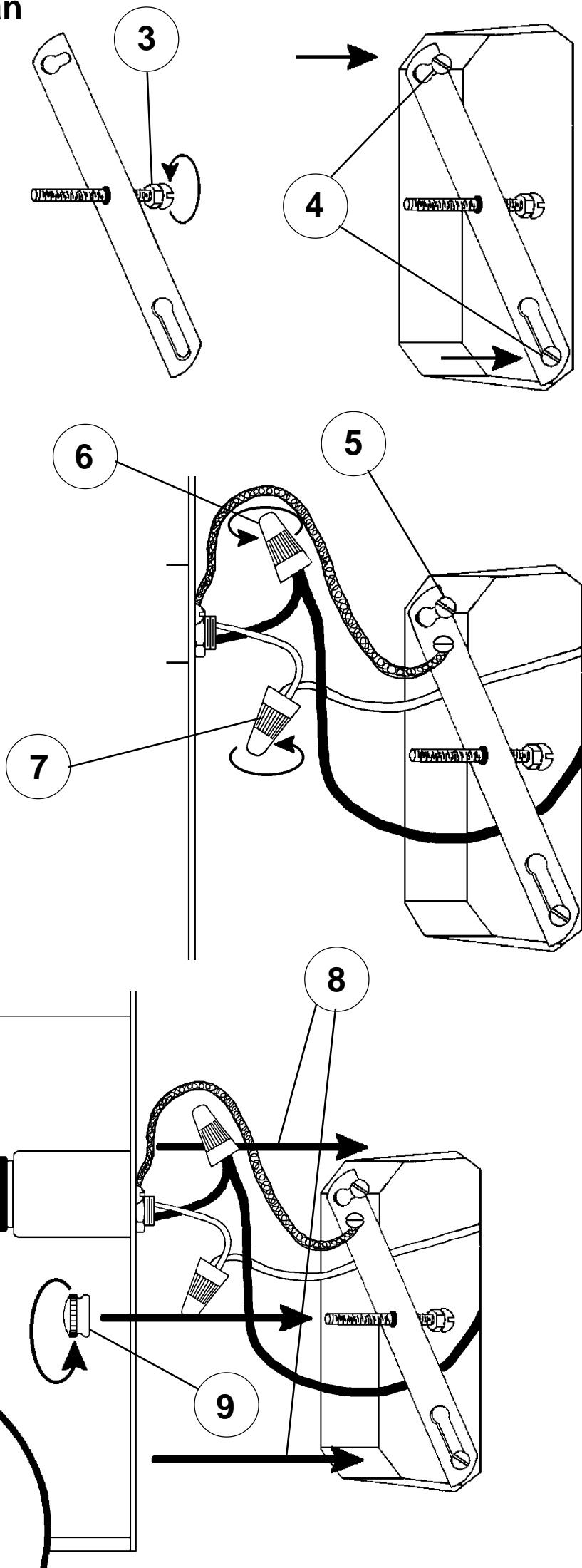


Electrical Danger

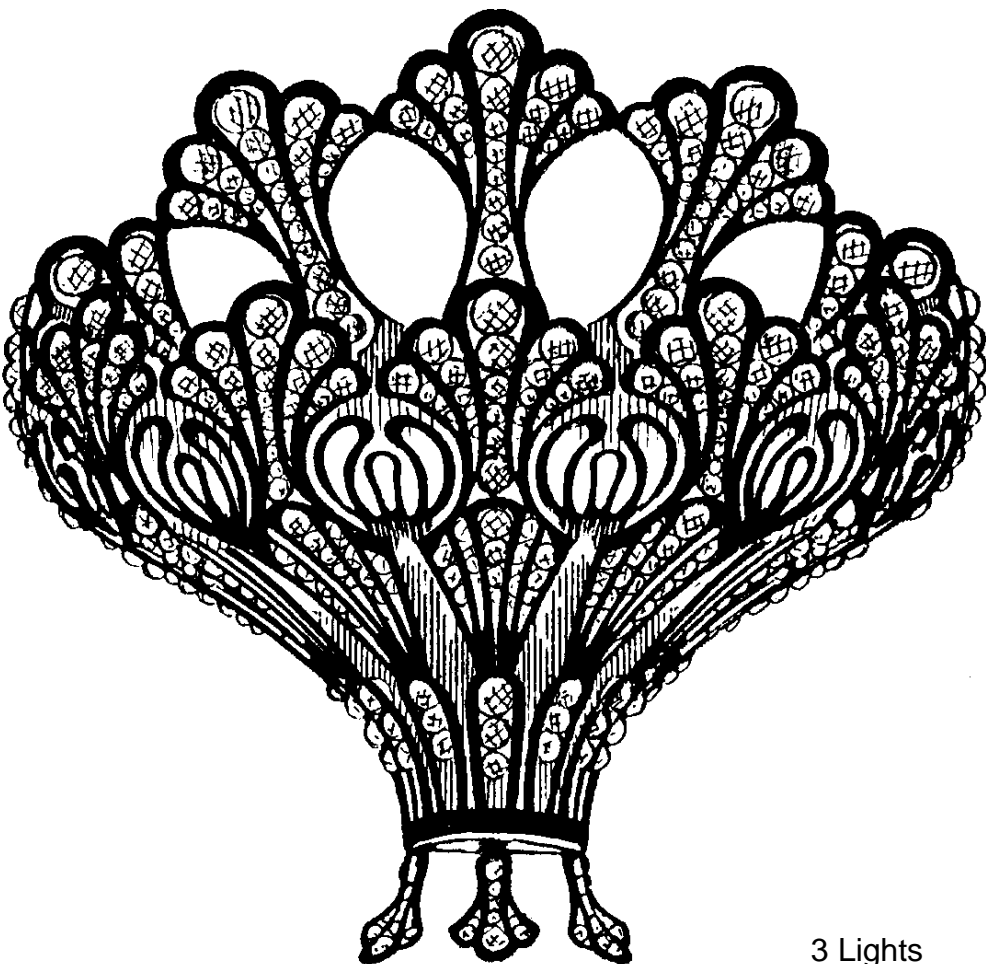


Turn Power Off

All electrical components must be installed by a licensed electrician in accordance with the National Electric Code and the appropriate local electrical codes.



CHANDELIER 7854-____ S TRIM DIAGRAM
(Finish Option)



3 Lights
Diameter: 12"
Body Length: 12"
Extension: 6"
Hanging Weight: 3 lbs.

THIS DESIGN IS THE PROPRIETARY
TRADE DRESS/TRADEMARK OF
SCHONBEK WORLDWIDE LIGHTING INC.

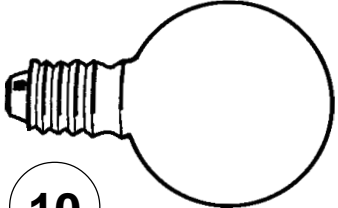
SCHONBEK®

See diagram on back page
Follow steps in exact order
Save this trim diagram for future reference

IMPORTANT
1 *Person who opens carton should record the following information for future service.*
CODE # _____ Four-digit number on outside of carton.
PACKER # _____ See crystal package label.
ORDER # _____ See crystal package label.

SCHONBEK IS A WORLD LEADER IN CHANDELIER DESIGN. PATENTS INCLUDE:
#D397,494

Instructions for crystal trimming
STEP 10



10

You will need 3 - G16-1/2
25 Watts Recommended
40 Watts Max

