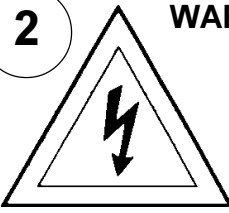


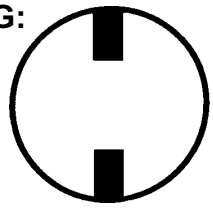
Instructions for electrician
STEPS 2 - 21

2



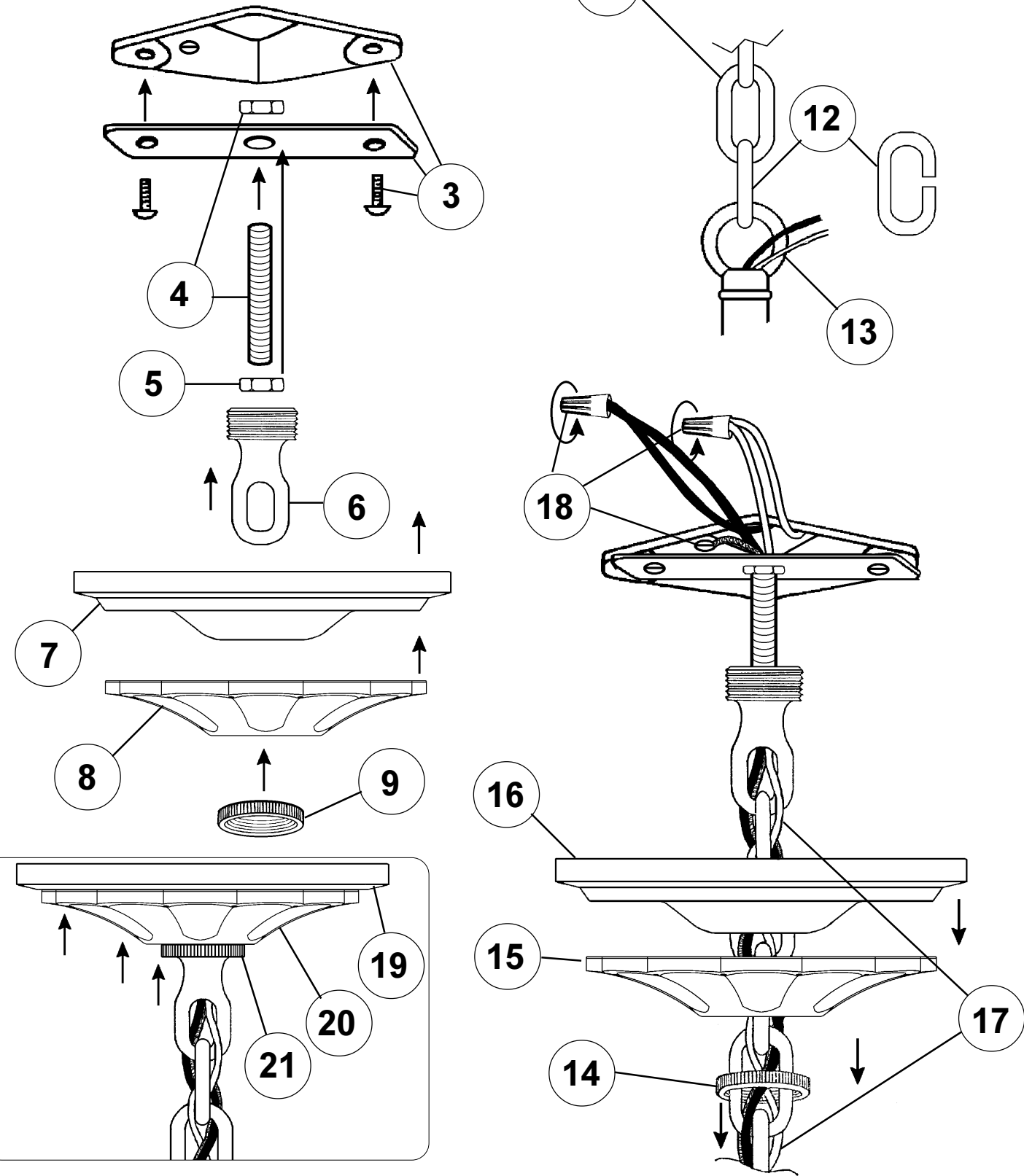
WARNING:

Electrical Danger



Turn Power Off

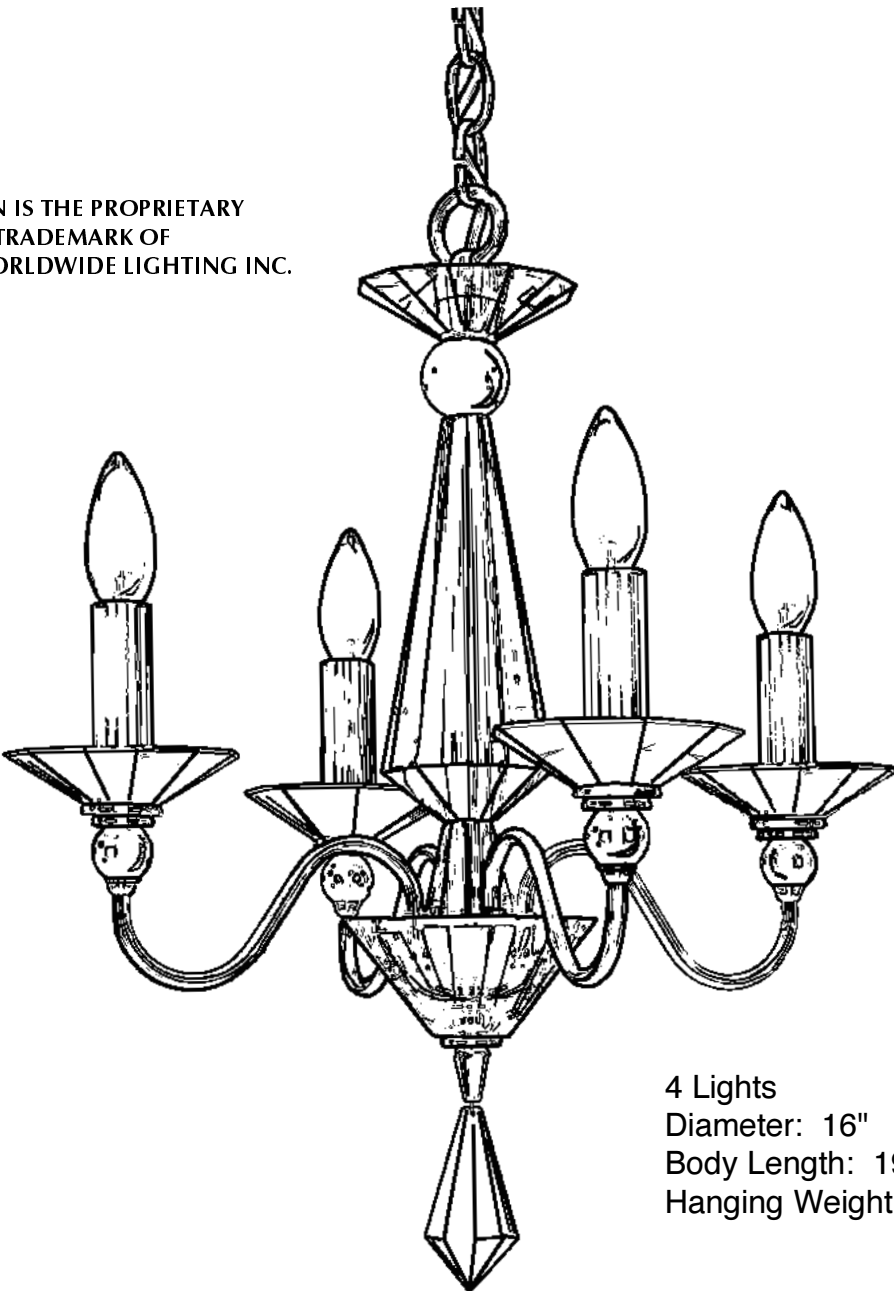
All electrical components must be installed by a licensed electrician in accordance with the National Electric Code and the appropriate local electrical codes.



CHANDELIER 9674-_____ TRIM DIAGRAM

(Finish Option) (Trim Option)

THIS DESIGN IS THE PROPRIETARY TRADE DRESS/TRADEMARK OF SCHONBEK WORLDWIDE LIGHTING INC.



4 Lights
Diameter: 16"
Body Length: 19-1/2"
Hanging Weight: 7 lbs.

SCHONBEK®

See diagram on back page
Follow steps in exact order
Save this trim diagram for future reference

1

IMPORTANT

Person who opens carton should record the following information for future service.


CODE # _____ Four-digit number on outside of carton.

PACKER # _____ See crystal package label.

ORDER # _____ See crystal package label.

SCHONBEK IS A WORLD LEADER IN CHANDELIER DESIGN. PATENTS INCLUDE:
#D515,727 & #D515,728

Instructions for crystal trimming
STEPS 22 - 27



25

You will need 4 - C10
25 Watts Recommended
60 Watts Max

Install bulbs and be
sure to test fixture
BEFORE trimming.

