

Instructions for electrician
STEPS 2 - 21

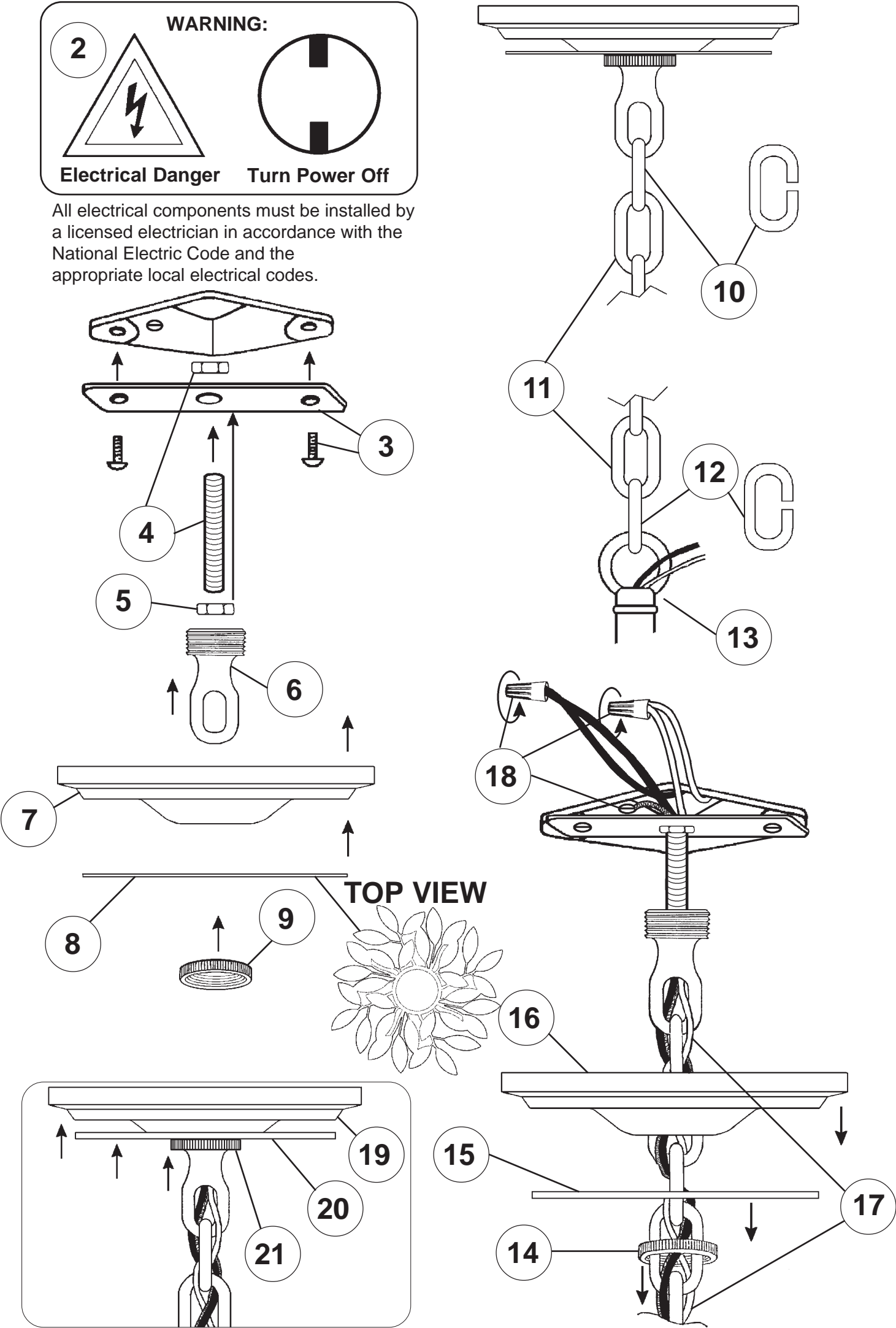
2

WARNING:

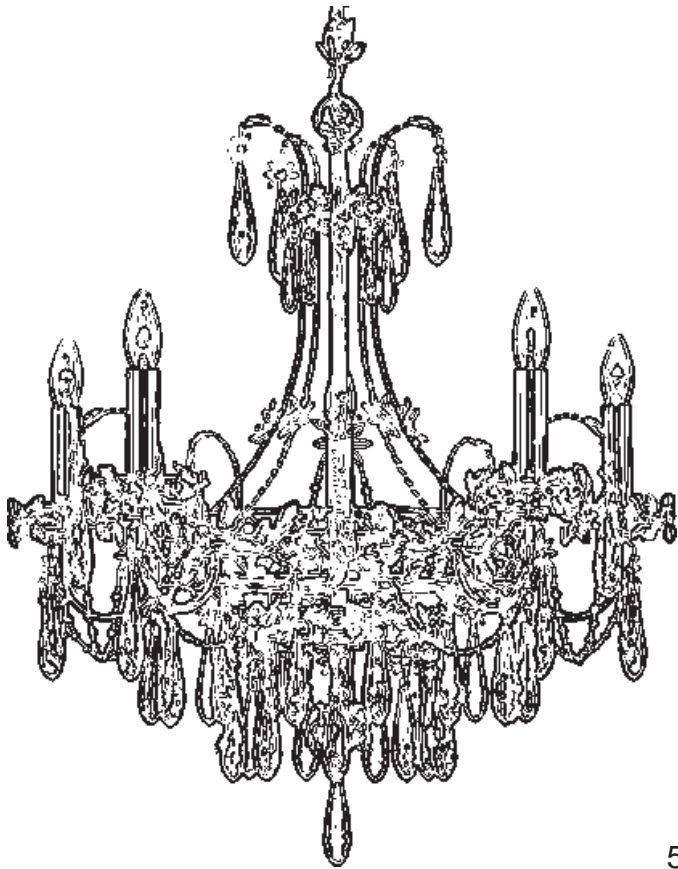
Electrical Danger

Turn Power Off

All electrical components must be installed by a licensed electrician in accordance with the National Electric Code and the appropriate local electrical codes.



EK6505N-____S TRIM DIAGRAM
(Finish Option)



5 Lights
Diameter: 22"
Height: 23-1/4"
Hanging Weight: 10lbs.

THIS DESIGN IS THE PROPRIETARY
TRADE DRESS/TRADEMARK OF
SCHONBEK WORLDWIDE LIGHTING
INC.



SCHONBEK®



MAX 60 W

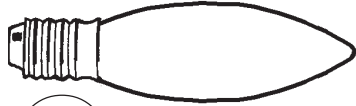
1

IMPORTANT
Person who opens carton should record the
following information for future service.

CODE # _____ Four-digit number on outside of carton.
PACKER # _____ See crystal package label.
ORDER # _____ See crystal package label.

SCHONBEK® is a member of the Swarovski company.

Instructions for crystal trimming
STEPS 22 - 32



22

You will need 5 - B10
25 Watts Recommended
60 Watts Max

Install bulbs and be
sure to test fixture
BEFORE trimming.

NOTE: LETTER "D" SWAGS
FROM FLOWER ON LETTER "B"
TO FLOWER ON LETTER "C" ON
SCROLL

