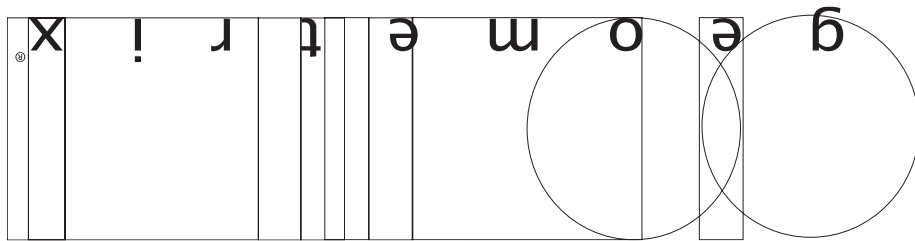


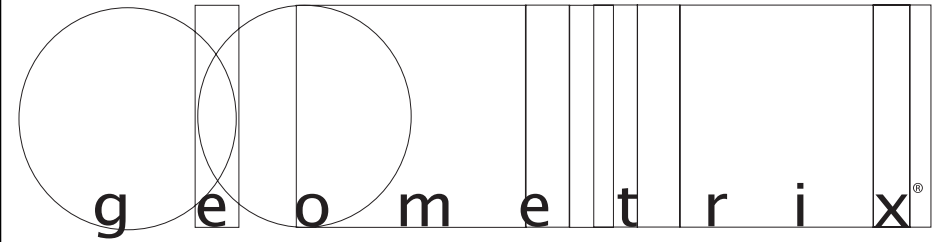
Trim Diagram  
Refrax™ Pendant RE0409A

Important: Label on back  
contains important information on  
your crystal. Please save in case you  
ever need to order matching crystal.

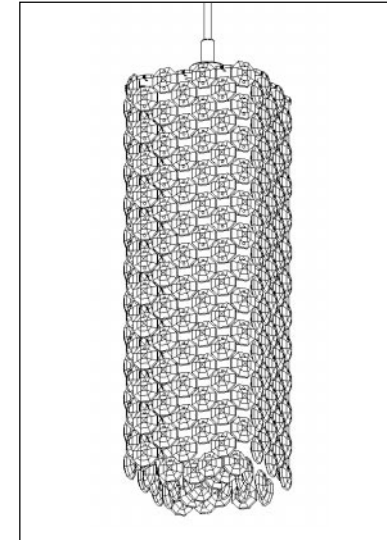


Schonbek Worldwide Lighting Inc., 61 Industrial Blvd., Plattsburgh NY 12901-1908  
Tel: 800.836.1892 or 518.563.7500 www.schonbek.com

© 2006 SCHONBEK WORLDWIDE LIGHTING INC., A. SCHONBEK & CO. LTD. WORLDWIDE COPYRIGHT RESERVED  
US PATENT: #5,109,325



Trim Diagram  
Refrax™ Pendant RE0409A



1 Light  
Length: 4", Width: 4", Height: 9"

Geometrix™ is designed by Schonbek  
with Swarovski Spectra® crystal.

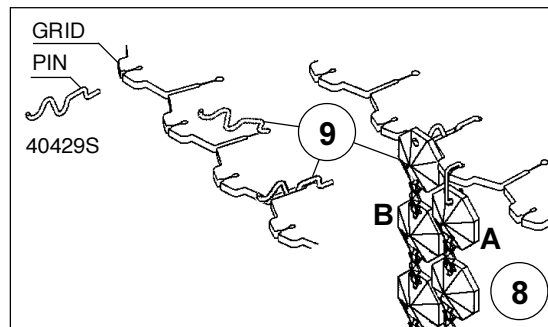
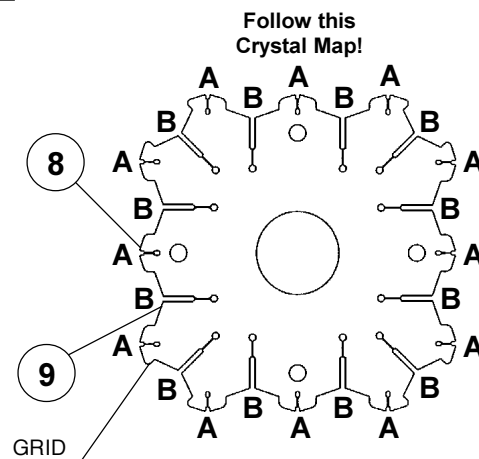
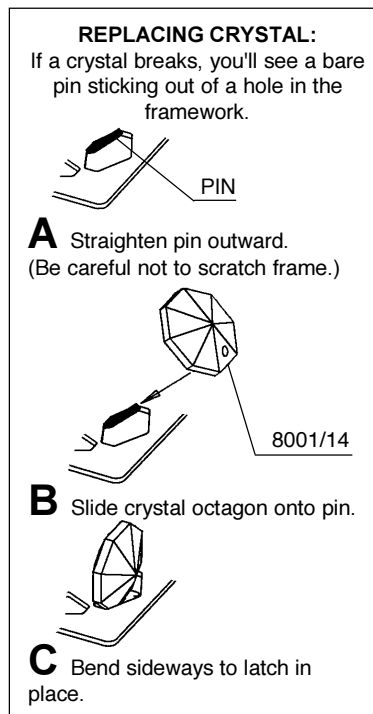
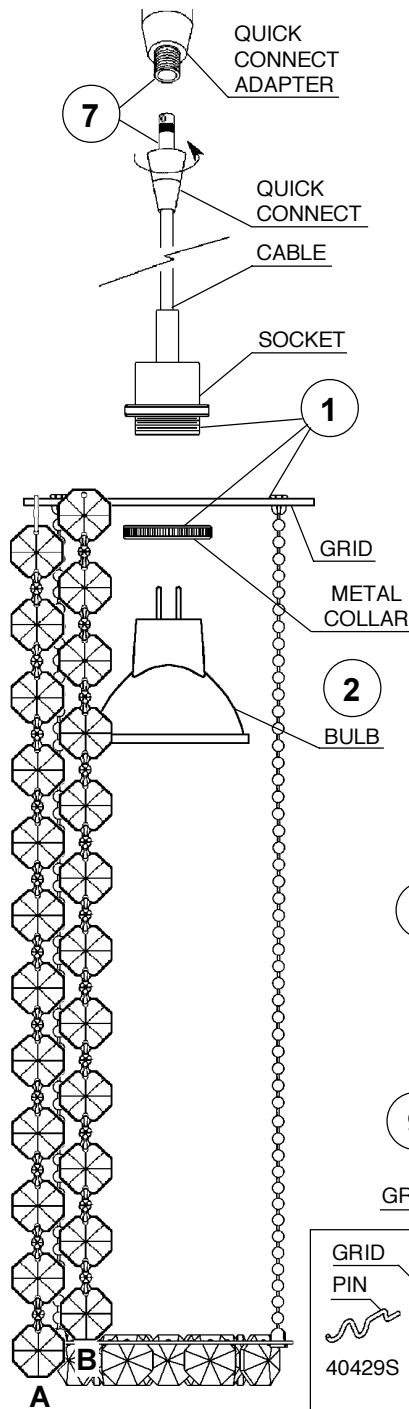
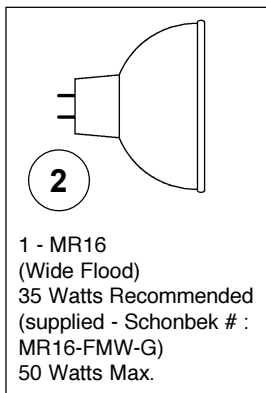


This design is the proprietary trade  
dress/trademark of Schonbek Worldwide Lighting Inc.

Please save your trim diagram for future reference.

IMPORTANT: Label on back contains important  
information on your crystal. Please save in case you  
ever need to order matching crystal.





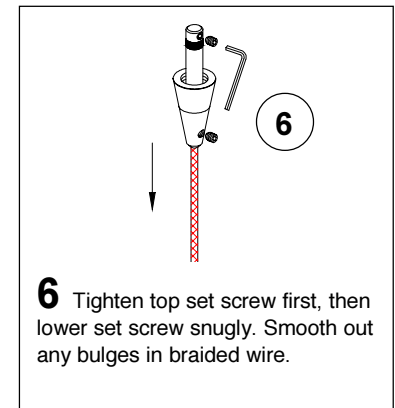
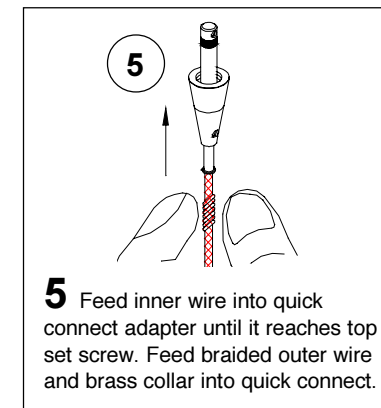
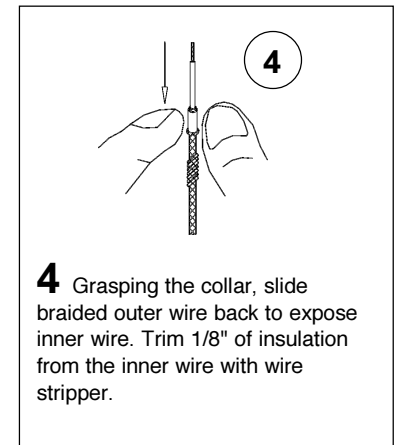
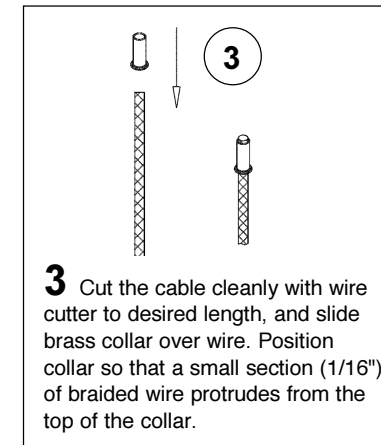
## How to Install MR16 Bulb and Refrax™ Pendant:

Pendants may be mounted to monorail systems, monopoints or line voltage track by coupling to the quick connect transformer adapter. Attached to the socket is a cable that may be cut on site during installation to any length (see instructions below).

**1** Position the pendant grid against the socket and secure in place by screwing the metal collar onto the socket.

**2** Plug bulb carefully but completely into socket. Use only an MR16 glass covered lamp bulb.

## How to Shorten the Cable:



**7** Screw quick connect into quick connect adapter until it seats. If you adjust the orientation of the pendant, be careful not to loosen the connection.

**8** Hang A chains first, following the crystal map. Hook the connectors into the pinholes located towards the outside of the grid. See illustration to the left.

**9** Insert pins into grid. Hang B chains by sliding the octagon with an open hole onto the pin. Chains B will nest into position between A chains. See illustration to the left.

