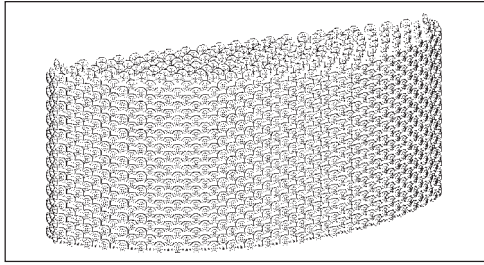
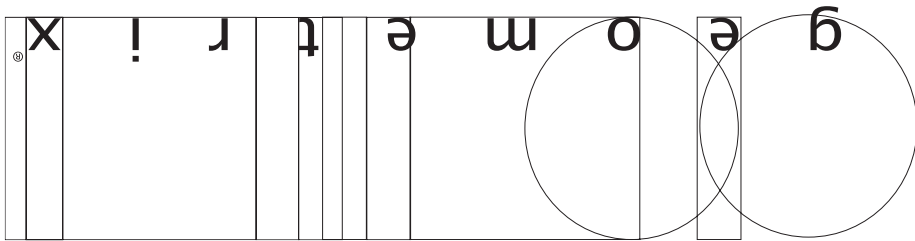


Important: Label on back contains important information on your crystal option. Please save in case you ever need to order matching crystal.

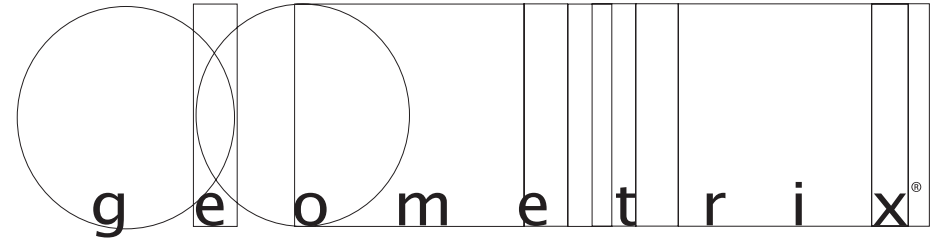


Trim Diagram
Refrax™ Pendant REW2109A

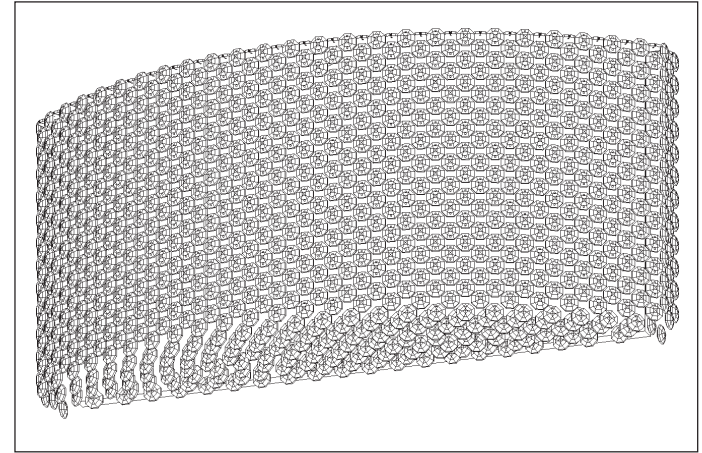


Schonbek Worldwide Lighting Inc., 61 Industrial Blvd., Plattsburgh NY 12901-1908
Tel: 800.836.1892 or 518.563.7500 www.schonbek.com

© 2006 SCHONBEK WORLDWIDE LIGHTING INC., A. SCHONBEK & CO. LTD. WORLDWIDE COPYRIGHT RESERVED
US PATENT: #5,109,325



Trim Diagram
Refrax™ Pendant REW2109A



6 Lights
Length: 21", Width: 6", Height: 9½"

Geometrix® is designed by Schonbek with Swarovski Spectra® crystal.



This design is the proprietary trade dress/trademark of Schonbek Worldwide Lighting Inc.

Please save your trim diagram for future reference.

IMPORTANT: Label on back contains important information on your crystal. Please save in case you ever need to order matching crystal.




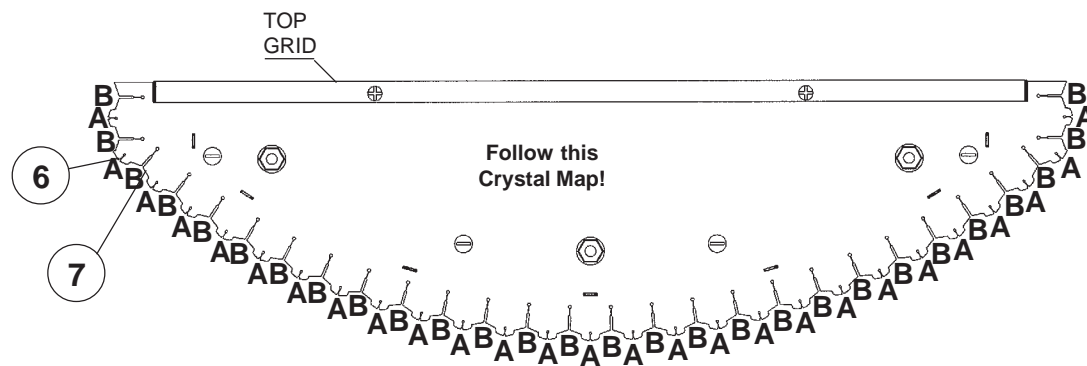
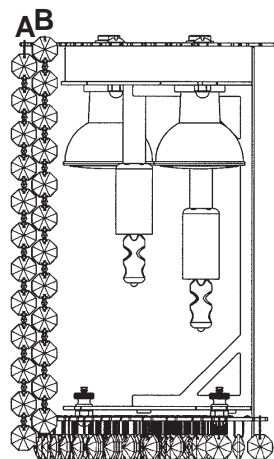
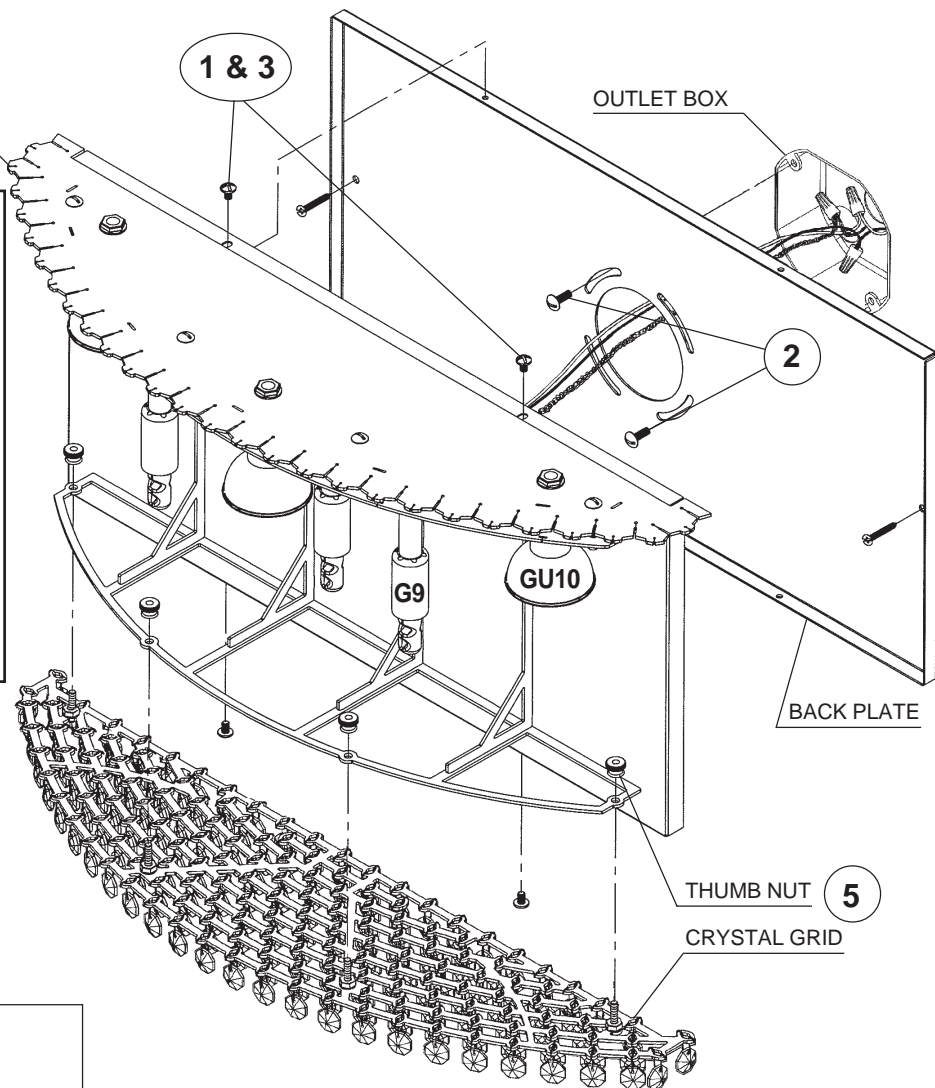
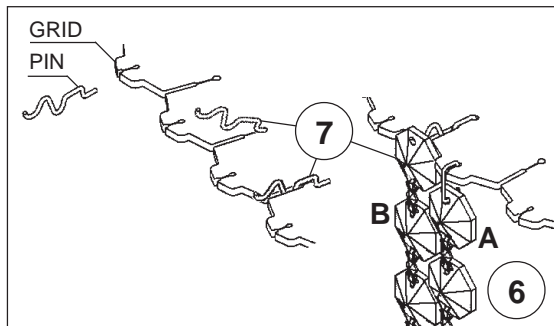


4


3 - GU10
(Wide Flood)
(supplied - Schonbek #: EXN/GU10)
50 Watts Max.

3 - G9 JCD
25 Watts Recommended
(Supplied - Schonbek #: JCD-G9-25)
40 Watts Max
Hanging Weight: 10 pounds

 To avoid damaging, do NOT touch bulb with bare hands. Install bulb with clean cloth or tissue.



How to Install G9 & GU10 Bulbs and Refrax™ Wall Bracket:

- 1** Loosen the (4) wall scone screws and separate the back plate from the wall scone. Feed stem and ground wires through back plate, then attach to power wires and ground wire in outlet box.
- 2** Attach back plate to the outlet box with the (2) screws NOT supplied.
- 3** Attach wall scone to back plate and tighten the four screws loosened previously.
- 4** Use G9 JCD bulbs in the small sockets. Plug bulbs carefully but completely into sockets. Use only GU10 base bulb in the larger sockets. Align the legs, insert and turn clockwise carefully but completely. Only use bulbs marked "suitable for open luminaires" OR bearing this symbol: 
- 5** Install bottom crystal grid with four thumb nuts (already screwed onto grid) to bottom of the chandelier.
- 6** Hang A chains first, following the crystal map. Hook the connectors into the pinholes located towards the outside of the top grid. See illustration to the left.
- 7** Insert pins into top grid. Hang B chains by sliding the octagon with an open hole onto the pin. Chains B will nest into position between A chains. See illustration to the left.