

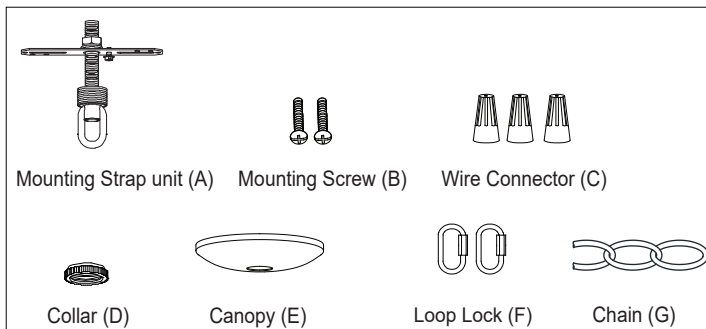
ASSEMBLY AND INSTALLATION INSTRUCTIONS

H0240

WARNING: TO AVOID RISK OF ELECTRICAL SHOCK, BE SURE TO SHUT OFF POWER WHILE INSTALLING OR SERVICING THIS FIXTURE.

NOTES: 1. Before installing, consult local electrical codes for wiring and grounding requirements.
2. READ AND SAVE THESE INSTRUCTIONS.

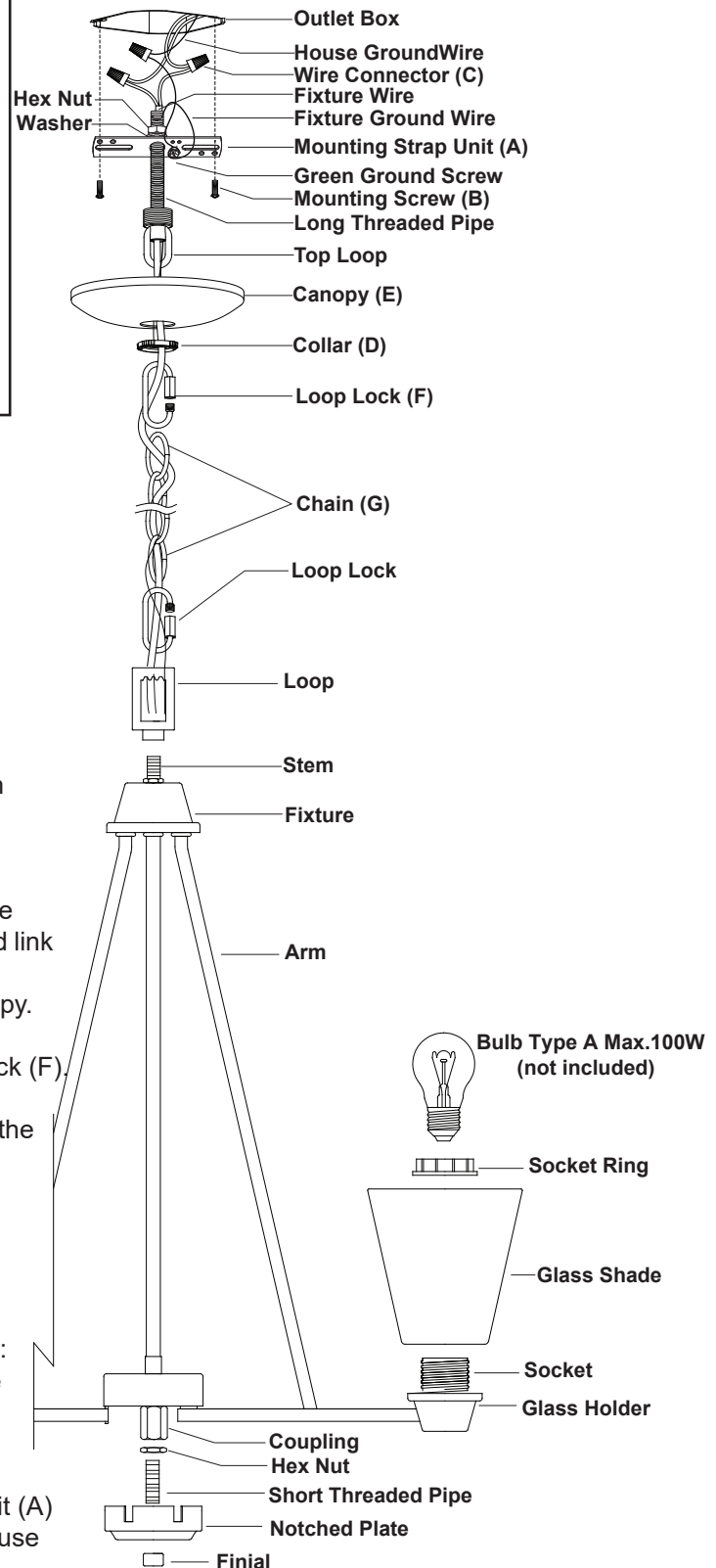
Hardware Package (included):



Installation Steps

Turn off the power at fuse or circuit box.

1. Attach the mounting strap unit (A) to outlet box with mounting screws (B).
 2. Adjust the arms of the fixture.
The arms should be positioned with equal distances between them.
 3. Thread fixture wires through threaded end of loop, and then secure the loop to stem of the fixture.
 4. Connect the chain:
 - Determine length of chain needed to achieve desired fixture height. (To remove excess chain section, use pliers to bend link open.)
 - Weave the fixture wires through the chain, collar, and canopy.
 5. Connect one end of the chain (G) to the loop using a loop lock (F).
 6. Connect the other end of the chain (G) to the top loop using the other loop lock (F).
 7. Thread the fixture wire and fixture ground wire through the top loop, long threaded pipe and mounting strap unit (A).
 8. Pull out the source wires from the outlet box.
Make wire connections using wire connectors (C) as follows:
 - Connect the smooth-coated wire (marked) from the fixture to the black wire from the power source.
 - Connect the ribbed-coated wire (unmarked) from the fixture to the white wire from the power source.
 - Attach the fixture grounding wire to the mounting strap unit (A) with the green grounding screw. Then connect it to the house ground wire with a wire connector (C).
- Carefully put the wires back into the outlet box.



VAXCEL

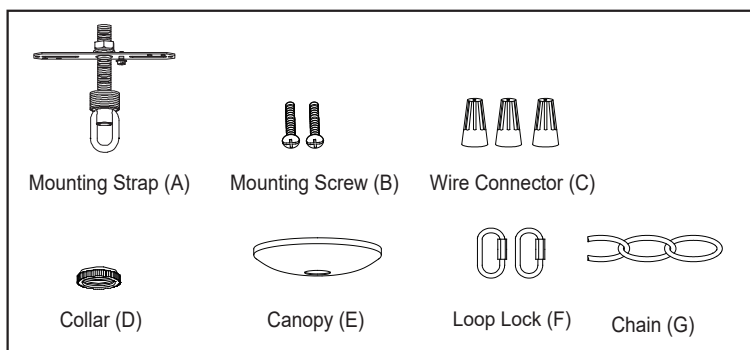
190424

9. Attach the canopy (E) to the mounting strap unit (A): insert the top loop through hole, then secure by tightening collar (D).
10. Screw the short threaded pipe into the coupling, then secure it with a hex nut.
11. Attach the notched plate to the short threaded pipe and secure with finial.
Note: Adjust the arms to locate each one in the corresponding slot on the notched plate.
12. Place the glass shades onto the glass holders, then secure them by tightening the socket rings.
13. Install bulbs (not included).
 See relamping label at socket area or packaging for maximum allowed wattage.

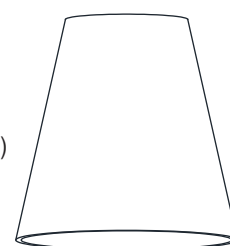
Turn on the power at fuse or circuit box.

The following parts are available for re-order if damaged or missing.

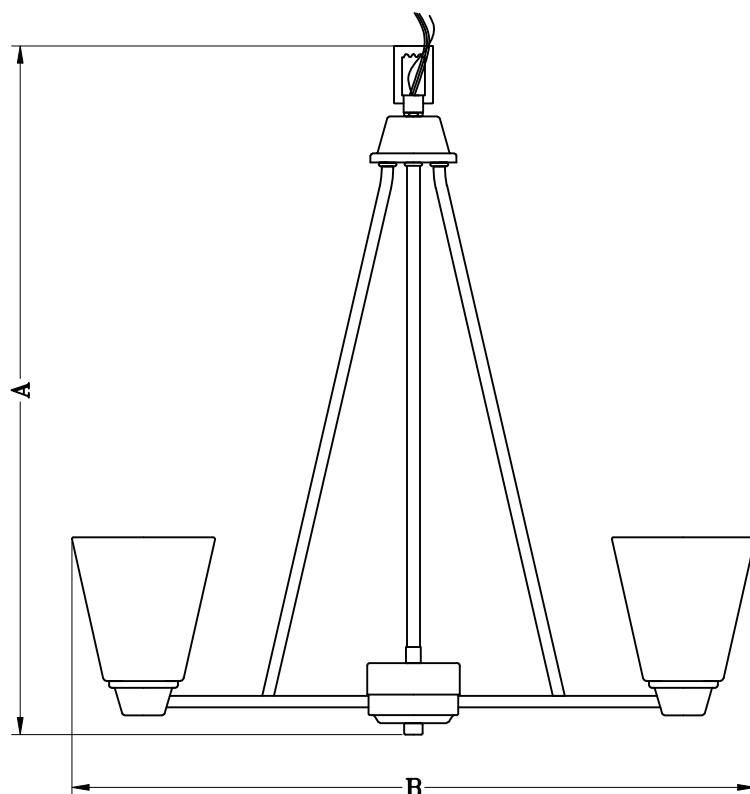
Spare Parts List:



Assembly Kit
5053MM (1 SET)



Glass Shade
9596EW (5 pcs)



A: 23-1/2"

B: 23-1/2"