

Fixture Type: \_\_\_\_\_

Catalog Number: \_\_\_\_\_

Project: \_\_\_\_\_

Location: \_\_\_\_\_

## Tesla Pro 3.5" Open Reflector Trim Square

| Model      | Beam  | Color Temp & CRI | Lumens | CBCP | Finish            |
|------------|-------|------------------|--------|------|-------------------|
| HR3LED718P | F 52° | 827 2700K - 80   | 1155   | 1451 | BN Brushed Nickel |
|            |       | 830 3000K - 80   | 1215   | 1525 | CB Copper Bronze  |
|            |       | 835 3500K - 80   | 1310   | 1654 | WT White          |
|            |       | 840 4000K - 80   | 1355   | 1731 |                   |
|            |       | 927 2700K - 90   | 990    | 1258 |                   |
|            |       | 930 3000K - 90   | 1100   | 1397 |                   |
|            | N 30° | 827 2700K - 80   | 1190   | 2570 |                   |
|            |       | 830 3000K - 80   | 1235   | 2650 |                   |
|            |       | 835 3500K - 80   | 1350   | 2923 |                   |
|            |       | 840 4000K - 80   | 1385   | 2972 |                   |
|            |       | 927 2700K - 90   | 1005   | 2183 |                   |
|            |       | 930 3000K - 90   | 1130   | 2248 |                   |
|            | S 15° | 827 2700K - 80   | 920    | 4307 |                   |
|            |       | 830 3000K - 80   | 985    | 4615 |                   |
|            |       | 835 3500K - 80   | 1000   | 4669 |                   |
|            |       | 840 4000K - 80   | 1025   | 4792 |                   |
|            |       | 927 2700K - 90   | 775    | 3618 |                   |
|            |       | 930 3000K - 90   | 700    | 3275 |                   |

Example: **HR3LED718PF827BN**

### DESCRIPTION

Tesla series is at the pinnacle of where lighting innovation meets energy-efficiency. A high-performance serviceable integrated LED with a state of the art light engine delivers incredible maintenance-free optics and performance ideal for high-end residential and commercial applications. With a wide variety of solid die-cast trims in a multitude of handsome plated or powder coated finishes, the Tesla collection is sure to enhance style and appeal in any space. Tesla PRO provides up to 60% higher lumen output over the standard Tesla collection for when more lighting is required such as in tall ceiling applications. The trim and LED engine are manufactured as a single unit with endless amounts of specifications including shape and finish of trim, adjustability, color temperature, and beam distribution to create the perfect combinations of form, factor, and function.

### FEATURES

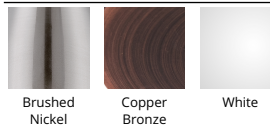
- 30° visual cutoff angle for glare control
- 5 year warranty

### SPECIFICATIONS

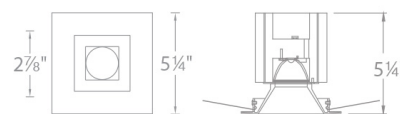
|                           |  |
|---------------------------|--|
| <b>Construction:</b>      | Die-cast aluminum construction   |
| <b>Power:</b>             | 22W  |
| <b>Input:</b>             | 120-277 VAC, 50/60Hz   |
| <b>Dimming:</b>           | ELV: 100-5%, 0-10V: 100-0%   |
| <b>Light Source:</b>      | Integrated LED<br>3 Step Mac Adam Ellipse  |
| <b>Rated Life:</b>        | 50000 Hours  |
| <b>Mounting:</b>          | Heavy gauge retention clips support trim firmly  |
| <b>Finish:</b>            | Electrostatically Powder Coated White,<br>Electroplated Brushed Nickel, Electroplated<br>Copper Bronze |
| <b>Ceiling Thickness:</b> | 1/2" - 3/4"  |
| <b>Operating Temp:</b>    | -4°F to 104°F (-20°C to 40°C)  |
| <b>Standards:</b>         | ETL, cETL, Damp Location Listed  |



### FINISHES



### LINE DRAWING



Fixture Type: \_\_\_\_\_

Catalog Number: \_\_\_\_\_

Project: \_\_\_\_\_

Location: \_\_\_\_\_

## Tesla 3.5"

### New Construction Housing Airtight

#### Model & Product

HR-3LED-H22D-A Tesla 3.5in LED Non-IC New Construction Housing

Example: **HR-3LED-H22D-A**

#### DESCRIPTION

Tesla series is at the pinnacle of where lighting innovation meets energy-efficiency. A high-performance serviceable integrated LED with a state of the art light engine delivers incredible maintenance-free optics and performance ideal for high-end residential and commercial applications. With a wide variety of solid die-cast trims in a multitude of handsome plated or powder coated finishes, the Tesla collection is sure to enhance style and appeal in any space. Tesla PRO provides up to 60% higher lumen output over the standard Tesla collection for when more lighting is required such as in tall ceiling applications. The trim and LED engine are manufactured as a single unit with endless amounts of specifications including shape and finish of trim, adjustability, color temperature, and beam distribution to create the perfect combinations of form, factor, and function.

#### FEATURES

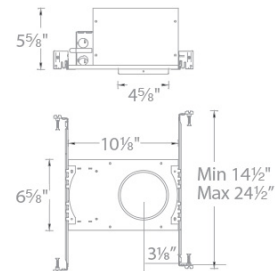
- Tesla 3.5in LED Non-IC New Construction Housing
- The Tesla series is engineered with state of the art high output LED technology for optimal thermal management and heat dissipation
- Driver concealed within the fixture
- 5 year warranty

#### SPECIFICATIONS

|                           |   |
|---------------------------|---|
| <b>Construction:</b>      | 20 Gauge cold rolled steel                                    |
| <b>Power:</b>             | 22.5W   |
| <b>Input:</b>             | 120-277 VAC, 50/60Hz  |
| <b>Dimming:</b>           | ELV: 100-5%, 0-10V: 100-0%                                    |
| <b>Mounting:</b>          | Heavy gauge retention clips secures housing firmly to ceiling |
| <b>Cut Out:</b>           | 4 5/8"  |
| <b>Finish:</b>            |   |
| <b>Ceiling Thickness:</b> | 1/2" - 3/4"   |
| <b>Operating Temp:</b>    | -4°F to 104°F (-20°C to 40°C)                                 |
| <b>Standards:</b>         | ETL, cETL, Non IC, Airtight                                   |



#### LINE DRAWING



Fixture Type: \_\_\_\_\_

Catalog Number: \_\_\_\_\_

Project: \_\_\_\_\_

Location: \_\_\_\_\_

## Tesla 3.5"

### New Construction Housing IC Airtight

#### Model & Product

HR-3LED-H15D-ICA Tesla 3.5in LED IC Rated New Construction Housing

Example: **HR-3LED-H15D-ICA**

#### DESCRIPTION

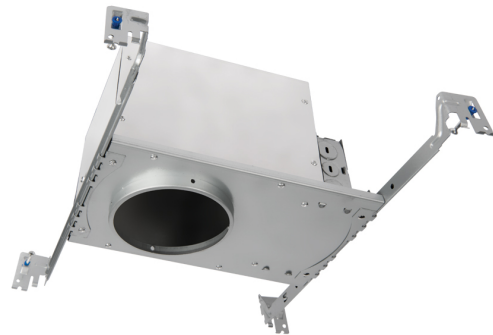
Tesla series is at the pinnacle of where lighting innovation meets energy-efficiency. A high-performance serviceable integrated LED with a state of the art light engine delivers incredible maintenance-free optics and performance ideal for high-end residential and commercial applications. With a wide variety of solid die-cast trims in a multitude of handsome plated or powder coated finishes, the Tesla collection is sure to enhance style and appeal in any space. Tesla PRO provides up to 60% higher lumen output over the standard Tesla collection for when more lighting is required such as in tall ceiling applications. The trim and LED engine are manufactured as a single unit with endless amounts of specifications including shape and finish of trim, adjustability, color temperature, and beam distribution to create the perfect combinations of form, factor, and function.

#### FEATURES

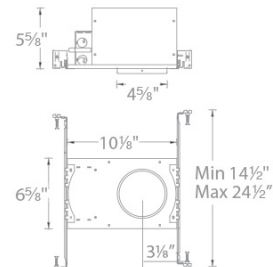
- Tesla 3.5in LED IC Rated New Construction Housing
- The Tesla series is engineered with state of the art high output LED technology for optimal thermal management and heat dissipation
- Driver concealed within the fixture
- 5 year warranty

#### SPECIFICATIONS

|                           |   |
|---------------------------|---|
| <b>Construction:</b>      | 20 Gauge cold rolled steel                      |
| <b>Power:</b>             | 14.5W   |
| <b>Input:</b>             | 120-277 VAC, 50/60Hz                            |
| <b>Dimming:</b>           | ELV: 100-5%, 0-10V: 100-0%                      |
| <b>Mounting:</b>          | Heavy gauge retention clips support trim firmly |
| <b>Cut Out:</b>           | 4 5/8"  |
| <b>Finish:</b>            |   |
| <b>Ceiling Thickness:</b> | 1/2" - 3/4"                                     |
| <b>Operating Temp:</b>    | -4°F to 104°F (-20°C to 40°C)                   |
| <b>Standards:</b>         | ETL, cETL, IC, Airtight                         |



#### LINE DRAWING



Fixture Type: \_\_\_\_\_

Catalog Number: \_\_\_\_\_

Project: \_\_\_\_\_

Location: \_\_\_\_\_

## Tesla 3.5"

### New Construction Housing IC Airtight

#### Model & Product

HR3LED-H18D1 Tesla 3.5in LED IC-Rated Airtight Narrow New Construction Housing

Example: **HR-3LED-H18D1-ICA**

#### DESCRIPTION

Tesla series is at the pinnacle of where lighting innovation meets energy-efficiency. A high-performance serviceable integrated LED with a state of the art light engine delivers incredible maintenance-free optics and performance ideal for high-end residential and commercial applications. With a wide variety of solid die-cast trims in a multitude of handsome plated or powder coated finishes, the Tesla collection is sure to enhance style and appeal in any space. Tesla PRO provides up to 60% higher lumen output over the standard Tesla collection for when more lighting is required such as in tall ceiling applications. The trim and LED engine are manufactured as a single unit with endless amounts of specifications including shape and finish of trim, adjustability, color temperature, and beam distribution to create the perfect combinations of form, factor, and function.

#### FEATURES

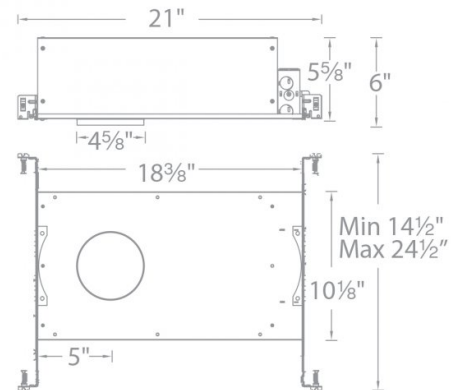
- Tesla 3.5in LED IC-Rated Airtight Narrow New Construction Housing
- The Tesla series is engineered with state of the art high output LED technology for optimal thermal management and heat dissipation
- Driver concealed within the fixture
- 5 year warranty

#### SPECIFICATIONS

|                           |   |
|---------------------------|---|
| <b>Construction:</b>      | 20 Gauge cold rolled steel                                    |
| <b>Power:</b>             | 21.5W   |
| <b>Input:</b>             | 120-277 VAC, 50/60Hz  |
| <b>Dimming:</b>           | ELV: 100-5%, 0-10V: 100-0%                                    |
| <b>Mounting:</b>          | Heavy gauge retention clips secures housing firmly to ceiling |
| <b>Cut Out:</b>           | 4 5/8"  |
| <b>Finish:</b>            |   |
| <b>Ceiling Thickness:</b> | 1/2" - 3/4"   |
| <b>Operating Temp:</b>    | -4°F to 104°F (-20°C to 40°C)                                 |
| <b>Standards:</b>         | ETL, cETL, IC, Airtight                                       |



#### LINE DRAWING



Fixture Type: \_\_\_\_\_

Catalog Number: \_\_\_\_\_

Project: \_\_\_\_\_

Location: \_\_\_\_\_

## Tesla 3.5" Remodel Housing

### Model & Product

HR-3LED-R22D Tesla 3.5in LED Non-IC Remodel Housing for Adjustable Trim

Example: **HR-3LED-R22D**

### DESCRIPTION

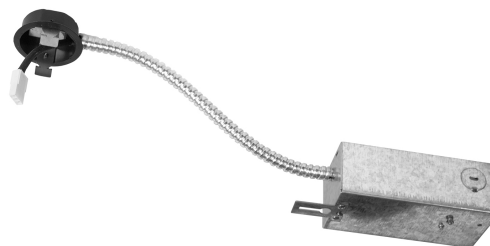
Tesla series is at the pinnacle of where lighting innovation meets energy-efficiency. A high-performance serviceable integrated LED with a state of the art light engine delivers incredible maintenance-free optics and performance ideal for high-end residential and commercial applications. With a wide variety of solid die-cast trims in a multitude of handsome plated or powder coated finishes, the Tesla collection is sure to enhance style and appeal in any space. Tesla PRO provides up to 60% higher lumen output over the standard Tesla collection for when more lighting is required such as in tall ceiling applications. The trim and LED engine are manufactured as a single unit with endless amounts of specifications including shape and finish of trim, adjustability, color temperature, and beam distribution to create the perfect combinations of form, factor, and function.

### FEATURES

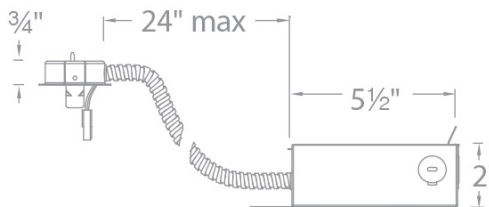
- Tesla 3.5in LED Non-IC Remodel Housing for Adjustable Trim
- The Tesla series is engineered with state of the art high output LED technology for optimal thermal management and heat dissipation
- Driver concealed within the fixture
- 5 year warranty

### SPECIFICATIONS

|                           |   |
|---------------------------|---|
| <b>Construction:</b>      | 20 Gauge cold rolled steel                                    |
| <b>Power:</b>             | 21.5W   |
| <b>Input:</b>             | 120-277 VAC, 50/60Hz  |
| <b>Dimming:</b>           | ELV: 100-5%, 0-10V: 100-0%                                    |
| <b>Mounting:</b>          | Heavy gauge retention clips secures housing firmly to ceiling |
| <b>Cut Out:</b>           | 4 5/8"  |
| <b>Finish:</b>            |   |
| <b>Ceiling Thickness:</b> | 1/2" - 1"   |
| <b>Operating Temp:</b>    | -4°F to 104°F (-20°C to 40°C)                                 |
| <b>Standards:</b>         | ETL, cETL, Non IC   |



### LINE DRAWING



# WAC LIGHTING

## Tesla 3.5" Remodel Housing Airtight

### Model & Product

HR-3LED-R18D-A Tesla 3.5in LED Non-IC Remodel Housing

Example: **HR-3LED-R18D-A**

### DESCRIPTION

Tesla series is at the pinnacle of where lighting innovation meets energy-efficiency. A high-performance serviceable integrated LED with a state of the art light engine delivers incredible maintenance-free optics and performance ideal for high-end residential and commercial applications. With a wide variety of solid die-cast trims in a multitude of handsome plated or powder coated finishes, the Tesla collection is sure to enhance style and appeal in any space. Tesla PRO provides up to 60% higher lumen output over the standard Tesla collection for when more lighting is required such as in tall ceiling applications. The trim and LED engine are manufactured as a single unit with endless amounts of specifications including shape and finish of trim, adjustability, color temperature, and beam distribution to create the perfect combinations of form, factor, and function.

### FEATURES

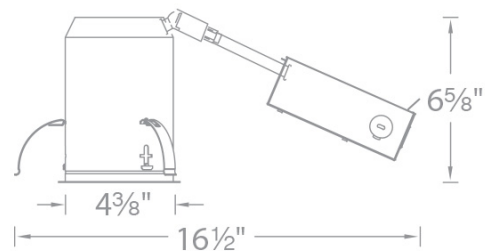
- Tesla 3.5in LED Non-IC Remodel Housing
- The Tesla series is engineered with state of the art high output LED technology for optimal thermal management and heat dissipation
- Driver concealed within the fixture
- 5 year warranty

### SPECIFICATIONS

|                    |   |
|--------------------|---|
| Construction:      | 20 Gauge cold rolled steel                                    |
| Power:             | 21.5W   |
| Input:             | 120-277 VAC, 50/60Hz  |
| Dimming:           | ELV: 100-5%, 0-10V: 100-0%                                    |
| Mounting:          | Heavy gauge retention clips secures housing firmly to ceiling |
| Cut Out:           | 4 5/8"  |
| Finish:            |   |
| Ceiling Thickness: | 1/2" - 3/4"   |
| Operating Temp:    | -4°F to 104°F (-20°C to 40°C)                                 |
| Standards:         | ETL, cETL, Non IC, Airtight                                   |



### LINE DRAWING



Fixture Type: \_\_\_\_\_

Catalog Number: \_\_\_\_\_

Project: \_\_\_\_\_

Location: \_\_\_\_\_