

Fixture Type: _____

Catalog Number: _____

Project: _____

Location: _____

Tikal

Quick Connect™ Pendant 3000K

Model & Wattage	Lumens	Color Temp & CRI	Finish
QP-915LED	235		CF/BN Clear Frosted/Brushed Nickel
QP915			CF/CH Clear Frosted/Chrome

Example: **QP-915LED-CF/BN**

DESCRIPTION

Mouth blown handcrafted pendants inspired by dripping ice crystals and other elements of winter, Ingo features the clean design of mouth blown German art glass for an elegant statement.

FEATURES

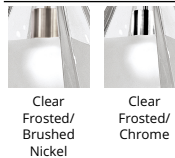
- All socket sets include 6ft wire that may be cut in the field
- Lamp included
- Free of projected heat, ultraviolet and infrared radiation
- 5 year warranty

SPECIFICATIONS

Construction:	Mouth blown glass shade with plated metal hardware, Mouth blown glass shade with electroplated metal hardware
Input:	12 VAC, 50/60Hz
Dimming:	ELV: 100-15%
Light Source:	Xenon Bi-Pin Max 50W, LED Bi-Pin 2.7W, 110lm, 3000K, 85CRI
Rated Life:	30000 Hours
Finish:	Clear Frosted/Chrome, Clear Frosted/Brushed Nickel
Standards:	UL, cUL, Dry Location Listed
Operating Temp:	-4°F to 104°F (-20°C to 40°C)



FINISHES



Clear Frosted/Brushed Nickel

Clear Frosted/Chrome

WAC LIGHTING

120V Track Quick Connect™ Adapter

Model & Track System	Finish
EN-HQ50AR H Track	BK Black
EN-JQ50AR J/J2 Track	BN Brushed Nickel
EN-LQ50AR L Track	DB Dark Bronze
	WT White

Example: **EN-HQ50AR-BK**

DESCRIPTION

120V Track systems are modular and can be designed for multiple applications in nearly any interior environment. Quick Connect transformers are used to install low voltage pendants and track fixtures to a track system. Compatible with any WAC Lighting QP or QF track fixture or pendant.

FEATURES

- The threaded male adapter used on Quick Connect fixtures makes inter-system compatibility a snap.
- Simply insert the metal fitting into the appropriate system adapter, hand tighten the threaded collar and you are done!
- Order one per Quick Connect fixture or pendant used
- Maximum weight of 5 lbs. supported
- 1W minimum load required
- Smooth and continuous ELV dimming
- Allows all Quick Connect elements to be used with the H, L, J, J2 track systems.
- Built-in auto reset, soft start, short and overload circuit
- Dark Bronze is only available on H track
- 5 year warranty

SPECIFICATIONS

Construction:	Polycarbonate
Input:	120 VAC, 50/60Hz
Dimming:	ELV: %, MLV: %
Finish:	White, Brushed Nickel, Dark Bronze, Black
Operating Temp:	-4°F to 104°F (-20°C to 40°C)
Standards:	UL, cUL, Dry Location Listed

Fixture Type: _____

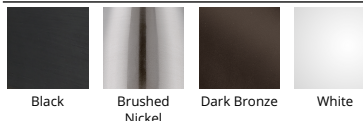
Catalog Number: _____

Project: _____

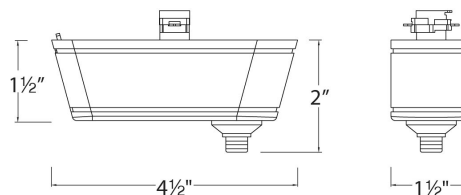
Location: _____



FINISHES



LINE DRAWING



WAC LIGHTING

W Track

Quick Connect™ Adapter

Model	Finish
EN-WQ50AR	BK Black
	PT Platinum
	WT White

Example: **EN-WQ50AR-BK**

DESCRIPTION

The threaded male adapter used on Quick Connect fixtures makes inter-system compatibility a snap. Simply insert the metal fitting into the appropriate system adapter, hand tighten the threaded collar and you are done!

FEATURES

- The Quick Connect collection includes a wide array of pendants and fixtures with different mounting options.
- The threaded male adapter makes inter-system compatibility a snap.
- Simply insert the metal fitting into the system adapter and hand tighten the collar.
- Order one per Quick Connect fixture or pendant used.
- Recessed transformer within W track
- Allows all Quick Connect elements to be used with the W track 120V systems
- 1W minimum load transformer
- Smooth and continuous ELV dimming
- Built-in auto reset, soft start, short and overload circuit
- 5 year warranty

SPECIFICATIONS

Input:	120 VAC, 50/60Hz
Dimming:	ELV: %
Finish:	White, Platinum, Black
Operating Temp:	-4°F to 104°F (-20°C to 40°C)
Standards:	UL, cUL, Dry Location Listed

Fixture Type: _____

Catalog Number: _____

Project: _____

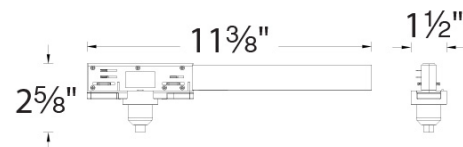
Location: _____



FINISHES



LINE DRAWING



Fixture Type: _____

Catalog Number: _____

Project: _____

Location: _____

Flexrail1™ Quick Connect™ Adapter

System Type	Model	Finish
HM1	EN50	PT Platinum

Example: **HM1-EN50-PT**

DESCRIPTION

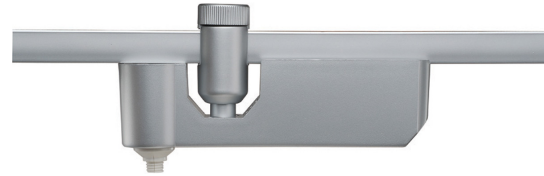
Flexrail™1 system transformer adapts all Quick Connect elements (track heads or pendants) for use with the HM1 rail system. The adapter contains a threaded nipple for Quick Connect socket sets and also houses a 50 watt electronic transformer. One adapter must be ordered for each quick connect element used on a system.

FEATURES

- The Flexrail1 Quick Connect transformer adapter allows any QP pendant or QF fixture to be used with the Flexrail1 system
- Order one per Quick Connect fixture or pendant used
- Contains a threaded nipple for Quick Connect socket sets and also houses a 50W transformer
- 1W minimum load required
- Transformer concealed within the fixture
- 5 year warranty

SPECIFICATIONS

Input:	120 VAC, 50/60Hz
Dimming:	ELV: 100-10%
Finish:	Platinum
Operating Temp:	-4°F to 104°F (-20°C to 40°C)
Standards:	UL, cUL, Dry Location Listed



FINISHES



Platinum

WAC LIGHTING

Quick Connect™

1 Point Round Mirrored Canopy

Model & Product

QMP-G1RN-MR 1-Point round mirrored canopy

Example: **QMP-G1RN-MR**

FEATURES

- For use with any of our Quick Connect pendants
- 60W integral electronic transformer included
- Smooth and continuous ELV dimming
- Includes accent caps in Brushed Nickel and Chrome to match any of our socket sets
- 5 year warranty

SPECIFICATIONS

Construction:	Mirrored Canopy with plated hardware
Power:	Max 60W
Input:	120 VAC, 50/60Hz
Standards:	UL, cUL, Dry Location Listed



Fixture Type: _____

Catalog Number: _____

Project: _____

Location: _____

WAC LIGHTING

Quick Connect™ 3 Points Rectangular Mirrored Canopy

Model & Product

QMP-G3RE-MR 3-Point rectangular mirrored canopy

Example: **QMP-G3RE-MR**

FEATURES

- For use with any of our Quick Connect pendants
- 60W integral electronic transformer for each drop
- Smooth and continuous ELV dimming
- Includes accent caps in Brushed Nickel and Chrome to match any of our socket sets
- 5 year warranty

SPECIFICATIONS

Construction:	Mirrored Canopy with plated hardware
Power:	Max 3 X 60W
Input:	120 VAC, 50/60Hz
Standards:	UL, cUL, Dry Location Listed



Fixture Type: _____

Catalog Number: _____

Project: _____

Location: _____

WAC LIGHTING

Quick Connect™ 6 Points Round Mirrored Canopy

Model & Product

QMP-G6RN-MR 6-Point round mirrored canopy

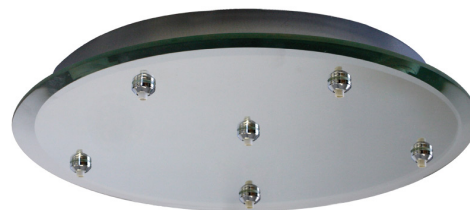
Example: **QMP-G6RN-MR**

FEATURES

- For use with any of our Quick Connect pendants
- 60W integral electronic transformer for each drop
- Smooth and continuous ELV dimming
- Includes accent caps in Brushed Nickel and Chrome to match any of our socket sets
- 5 year warranty

SPECIFICATIONS

Construction:	Mirrored Canopy with plated hardware
Power:	Max 6 X 60W
Input:	120 VAC, 50/60Hz
Standards:	UL, cUL, Dry Location Listed



Fixture Type: _____

Catalog Number: _____

Project: _____

Location: _____

WAC LIGHTING

Quick Connect™

12 Points Round Mirrored Canopy

Model & Product

QMP-G12RN-MR 12-Point round mirrored canopy

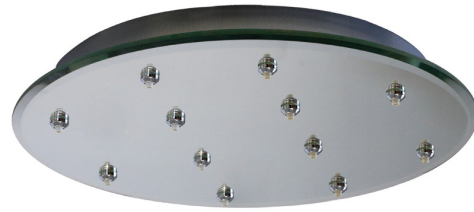
Example: **QMP-G12RN-MR**

FEATURES

- For use with any of our Quick Connect pendants
- 60W integral electronic transformer for each drop
- Smooth and continuous ELV dimming
- Includes accent caps in Brushed Nickel and Chrome to match any of our socket sets
- 5 year warranty

SPECIFICATIONS

Construction:	Mirrored Canopy with plated hardware
Power:	Max 12 X 60W
Input:	120 VAC, 50/60Hz
Standards:	UL, cUL, Dry Location Listed



Fixture Type: _____

Catalog Number: _____

Project: _____

Location: _____

WAC LIGHTING

Quick Connect™ 3 Points Round Mirrored Canopy

Model & Product

QMP-G3RN-MR 3-Point round mirrored canopy

Example: **QMP-G3RN-MR**

FEATURES

- For use with any of our Quick Connect pendants
- 60W integral electronic transformer for each drop
- Smooth and continuous ELV dimming
- Includes accent caps in Brushed Nickel and Chrome to match any of our socket sets
- 5 year warranty

SPECIFICATIONS

Construction:	Mirrored Canopy with plated hardware
Power:	Max 3 X 60W
Input:	120 VAC, 50/60Hz
Standards:	UL, cUL, Dry Location Listed



Fixture Type: _____

Catalog Number: _____

Project: _____

Location: _____

WAC LIGHTING

Fixture Type: _____

Catalog Number: _____

Project: _____

Location: _____

Quick Connect™

4.5" Shallow Pendant Canopy, Remote Transformer Required

Model & Size	Finish
QMP-1RN-TR	BN Brushed Nickel
QMP-1SQ-TR	CH Chrome

Example: **QMP-1RN-TR-BN**

FEATURES

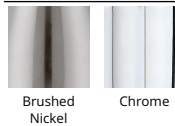
- For use with any of our Quick Connect pendants
- Mounts over a standard 4" junction box
- Order Class 2 remote transformer separately
- 5 year warranty

SPECIFICATIONS

Construction:	Plated aluminum
Input:	12 VAC
Finish:	Electroplated Brushed Nickel, Electroplated Chrome
Standards:	UL, cUL, Dry Location Listed



FINISHES



WAC LIGHTING

Quick Connect™

4.5" Pendant Canopy, Transformer Included

Model & Size	Finish
QMP-60ERN	BN Brushed Nickel
	CH Chrome

Example: **QMP-60ERN-BN**

FEATURES

- For use with any of our Quick Connect pendants
- 60W integral electronic transformer included
- Smooth and continuous ELV dimming
- Mounts over a standard 4" junction box
- Includes optional decorative collar for shallow junction box
- 5 year warranty

SPECIFICATIONS

Construction:	Plated aluminum
Power:	Max 60W
Input:	120 VAC, 50/60Hz
Finish:	Electroplated Brushed Nickel, Electroplated Chrome
Standards:	UL, cUL, Dry Location Listed

Fixture Type: _____

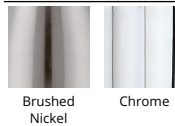
Catalog Number: _____

Project: _____

Location: _____



FINISHES



WAC LIGHTING

Fixture Type: _____

Catalog Number: _____

Project: _____

Location: _____

Quick Connect™

3.25" Shallow Pendant Canopy, Remote Transformer Required

Model	Finish
QMP-MI-TR	BN Brushed Nickel
	CH Chrome

Example: **QMP-MI-TR-BN**

FEATURES

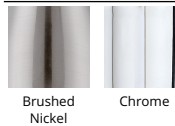
- For use with any of our Quick Connect pendants
- Includes recess wiring compartment with one knock out that accepts trade size connector
- Order Class 2 remote transformer separately
- 5 year warranty

SPECIFICATIONS

Construction:	Plated aluminum
Input:	12 VAC
Finish:	Electroplated Brushed Nickel, Electroplated Chrome
Standards:	UL, cUL, Dry Location Listed



FINISHES



WAC LIGHTING

Fixture Type: _____

Catalog Number: _____

Project: _____

Location: _____

Quick Connect™

4.5" Sloped Ceiling Pendant Canopy, Transformer Included

Model & Wattage	Lumens	Color Temp & CRI	Finish
QMP-S60ERN Max 60W			BN Brushed Nickel CH Chrome

Example: **QMP-S60ERN-BN**

FEATURES

- For use with any of our Quick Connect pendants
- 60W integral electronic transformer included
- Smooth and continuous ELV dimming
- Mounts over a standard 4" junction box
- Includes optional decorative collar for shallow junction box
- Swivels up to 45° in either direction
- 5 year warranty

SPECIFICATIONS

Construction:	Plated aluminum
Power:	Max 60W
Input:	120 VAC, 50/60Hz
Finish:	Electroplated Brushed Nickel, Electroplated Chrome
Standards:	UL, cUL, Dry Location Listed



FINISHES

