

WAC LIGHTING

Fixture Type: _____

Catalog Number: _____

Project: _____

Location: _____

Oculux 1"

8W 0°-20° Adjustable Square

Model	Beam	Color Temp & CRI		Lumens	CBCP	Finish
R1BSA-08	F 45°	927	2700K - 90	585	870	BN Brushed Nickel
		930	3000K - 90	630	941	WT White
	N 25°	927	2700K - 90	630	2225	
		930	3000K - 90	680	2405	

Example: **R1BSA-08-F927-BN**

DESCRIPTION

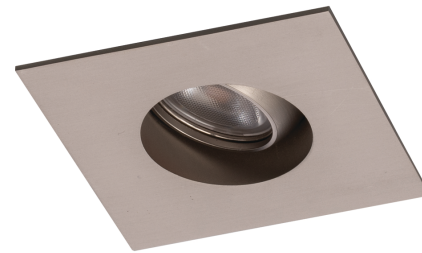
Oculux 1" is an architectural grade recessed downlight with trim, LED light engine, and configurable housing ready to install as an IC-Rated New Construction or Remodel all-in-one unit. Oculux is Energy Star Rated and CEC Title 24 Compliant with Wet Location listing which means it can be installed in a broad range of applications. 35° visual cutoff provides superb glare reduction. Available in Round or Square open reflector and adjustable trim options.

FEATURES

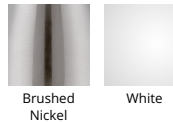
- Cutout 2 1/2"
- Single spot light source
- Ceiling thickness: 1/2" - 1"
- Sold as New Construction, may be reconfigured in the field for Remodel
- Driver concealed within the fixture
- 5 year warranty

SPECIFICATIONS

Construction:	Die-cast aluminum trim with aluminum heat sink
Power:	7.5W
Input:	120 VAC, 50/60Hz
Dimming:	TRIAC: 100-5%, ELV: 100-5%
Light Source:	Integrated LED 3 Step Mac Adam Ellipse
Rated Life:	50000 Hours
Cut Out:	2 1/2"
Finish:	Electrostatically Powder Coated White, Electroplated Brushed Nickel
Ceiling Thickness:	1/2" - 1"
Operating Temp:	-4°F to 104°F (-20°C to 40°C)
Standards:	ETL, cETL, Damp Location Listed, Energy Star 2.0, Title 24 JA8-2016 Compliant, IC, Airtight



FINISHES



LINE DRAWING

