

WAC LIGHTING

Fixture Type: _____

Catalog Number: _____

Project: _____

Location: _____

Oculux 3.5"

0° - 35° Adjustable Square

| Model | Beam | Color Temp & CRI | Lumens | CBCP | Finish |
|-------|-------|------------------|--------|------|-------------------|
| R3BSA | F 50° | 927 2700K - 90 | 900 | 1196 | BN Brushed Nickel |
| | | 930 3000K - 90 | 970 | 1285 | WT White |
| | N 25° | 927 2700K - 90 | 915 | 2513 | |
| | | 930 3000K - 90 | 985 | 2701 | |
| | S 15° | 927 2700K - 90 | 900 | 4384 | |
| | | 930 3000K - 90 | 970 | 4712 | |

Example: **R3BSA-F927-BN**

DESCRIPTION

Oculux 3.5" is an architectural grade recessed downlight available in an IC-Rated Airtight new construction or IC-Rated remodel housing sold separately. Oculux is Energy Star Rated and CEC Title 24 Compliant with Wet Location listing which means it can be installed in a broad range of applications. 35° visual cutoff provides superb glare reduction. Available in round or square open reflector and adjustable trim options.

FEATURES

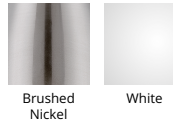
- Shallow housing under 4in depth
- Single spot light source
- 5 year warranty

SPECIFICATIONS

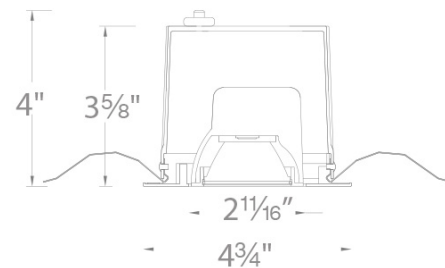
| | |
|------------------------|---|
| Construction: | Die-cast aluminum trim and heat sink |
| Power: | 11W |
| Light Source: | Integrated LED 3 Step Mac Adam Ellipse |
| Rated Life: | 50000 Hours |
| Mounting: | Heavy gauge retention clips support trim firmly |
| Finish: | Electroplated Brushed Nickel, Electrostatically Powder Coated White |
| Operating Temp: | -4°F to 104°F (-20°C to 40°C) |
| Standards: | ETL, cETL, Damp Location Listed, Energy Star 2.0, Title 24 JA8-2016 Compliant |



FINISHES



LINE DRAWING



WAC LIGHTING

Oculux 3.5" Remodel Housing

Model & Product

R3BBRT-10 Oculux 3.5" LED Remodel IC-Rated Housing

Example: **R3BBRT-10**

DESCRIPTION

Oculux 3.5" is an architectural grade recessed downlight available in an IC-Rated Airtight new construction or IC-Rated remodel housing sold separately. Oculux is Energy Star Rated and CEC Title 24 Compliant with Wet Location listing which means it can be installed in a broad range of applications. 35° visual cutoff provides superb glare reduction. Available in round or square open reflector and adjustable trim options.

FEATURES

- Shallow housing under 4in depth
- Driver concealed within the fixture
- 5 year warranty

SPECIFICATIONS

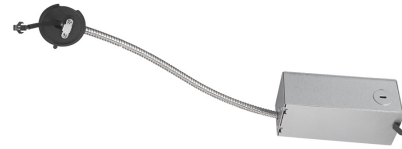
| | |
|---------------------------|---|
| Construction: | 20 gauge cold rolled steel wiring box |
| Power: | 11W |
| Input: | 120 VAC, 50/60Hz |
| Dimming: | TRIAC: 100-5%, ELV: 100-5%, 0-10V: 100-5% |
| Rated Life: | 50000 Hours |
| Mounting: | Heavy gauge retention clips secures housing firmly to ceiling |
| Cut Out: | 4 1/4" |
| Finish: | |
| Ceiling Thickness: | 1/2" - 1" |
| Operating Temp: | -4°F to 104°F (-20°C to 40°C) |
| Standards: | ETL, cETL, IC, Airtight |

Fixture Type: _____

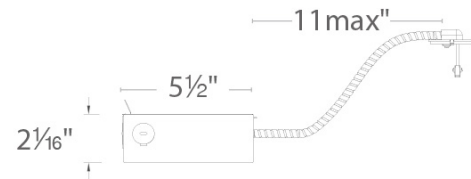
Catalog Number: _____

Project: _____

Location: _____



LINE DRAWING



Fixture Type: _____

Catalog Number: _____

Project: _____

Location: _____

Oculux 3.5" New Construction Housing

Model

R3BNICA-10 Oculux 3.5" LED
New Construction IC-Rated Airtight
Housing (120V)

R3BNICA-10U-EM Oculux 3.5"
LED New Construction IC-Rated
Airtight Housing (120-277V)

R3BNICA-10U Oculux 3.5" LED
New Construction IC-Rated Airtight
Housing (120-277V)

DESCRIPTION

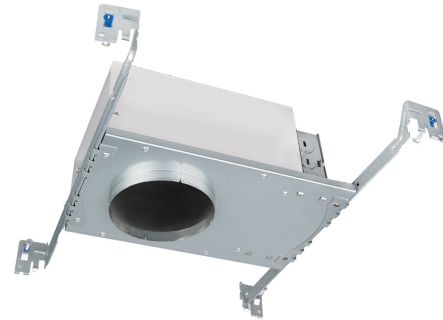
Oculux 3.5" is an architectural grade recessed downlight available in an IC-Rated Airtight new construction or IC-Rated remodel housing sold separately. Oculux is Energy Star Rated and CEC Title 24 Compliant with Wet Location listing which means it can be installed in a broad range of applications. 35° visual cutoff provides superb glare reduction. Available in round or square open reflector and adjustable trim options.

FEATURES

- Shallow housing under 4in depth
- Driver concealed within the fixture
- 5 year warranty

SPECIFICATIONS

| | |
|---------------------------|---|
| Construction: | 20 gauge cold rolled steel wiring box |
| Power: | 11W |
| Input: | 120 VAC, 120-277 VAC, 50/60Hz |
| Dimming: | TRIAC: 100-5%, ELV: 100-5%, 0-10V: 100-5% |
| Rated Life: | 50000 Hours |
| Mounting: | Heavy gauge retention clips secures housing firmly to ceiling |
| Cut Out: | 4 1/4" |
| Finish: | |
| Ceiling Thickness: | 1/2" - 1" |
| Operating Temp: | -4°F to 104°F (-20°C to 40°C) |
| Standards: | ETL, cETL, IC, Airtight |



LINE DRAWING

